

MECHANICAL

TEMP. RANGE: -40°C ~ +105°C
 STEIP LENGTH: 6-7mm
 SOLDERING TEMPERATURE: 260°C/5S

MATERIAL

HOUSING: PA66, UL94V-0
 PIN: COPPER ALLOY, TIN PLATED
 SCREWS: M2.5 STEEL, Zn PLATED, TORQUE:0.4N.m

TECHNICAL DATA

UL/CUL

| | | | |
|----------------------|--------------|---|-----|
| SAFETY APPROVAL | | | |
| USE GROUP | B | C | D |
| RATED VOLTAGE (V) | 300 | - | 300 |
| RATED CURRENT (A) | 15 | - | 10 |
| WIRE RANGE | 26-12 | | |
| SOLID/STRANDED (AWG) | | | |
| WITHSTANDING VOLTAGE | 1600V (1MIN) | | |

| | | | |
|-----------------------------------|--------------|-----|-----|
| IEC | IEC60947-7-4 | | |
| OVERVOLTAGE CATEGORY | III | III | II |
| CONTAMINATION CLASS | 3 | 2 | 2 |
| RATED VOLTAGE (V) | 250 | 400 | 630 |
| RATED CURRENT (A) | 22 | 22 | 22 |
| IMPULSE WITHSTANDING VOLTAGE (KV) | 4.0 | 4.0 | 4.0 |
| CONDUCTOR CROSS SECTION | 0.5-2.5 | | |
| SOLID/FLEXIBLE (mm ²) | | | |

ORDER INFORMATION

5 T S 5 0 0 R - 1 6 7 N X X X L X - 0 1

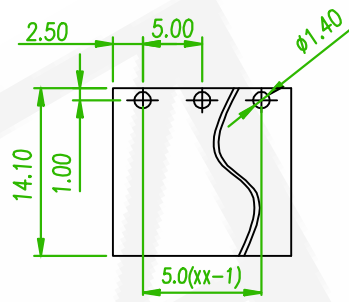
500
PITCH:5.00mm

SERIES NO.

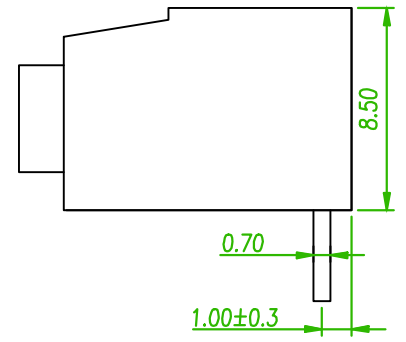
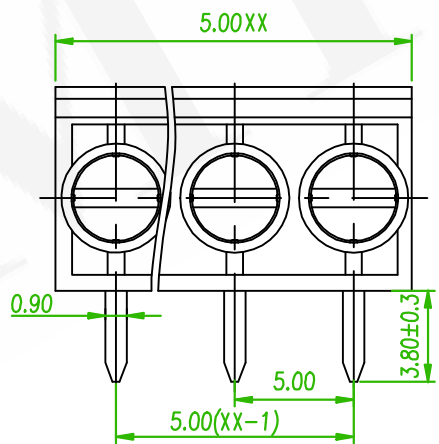
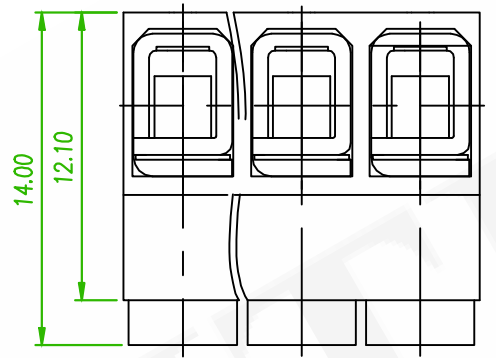
POLES
(02-24P)

E:GREEN

A:TRAY
B:BAG



RECOMMENDED PCB LAYOUT
(PCB TOLERANCE ±0.05)



| | | | | | | | | | | |
|---|-------|--------------|---------------|---------------|----------------|-----------------|----------------|----------------|-----------------|------|
| linear dimension(Tolerances Standard GB/T 14486-2008) | | | | | | | | — | ▱ | ⊥ |
| variable range | to 6 | over 6 to 10 | over 10 to 30 | over 30 to 60 | over 60 to 100 | over 100 to 160 | over 160 to 10 | over 10 to 100 | over 100 to 100 | |
| tolerance | ±0.20 | ±0.30 | ±0.50 | ±0.70 | ±1.00 | ±1.30 | ±1.60 | 0.10 | 0.30 | 0.60 |

| | | | |
|------|-------------------------------------|---------|------------|
| △ | ECN NO.: 240348 Revise the drawing | Gaby | 2024/04/30 |
| △x1 | ECN NO.:200718 Revise the Tolerance | Alice | 2020/12/07 |
| REV. | ECN NO. OR DESCRIPTION | REVISED | DATE |

耀德精密有限公司
Amtek Technology Co., Ltd.
TEL: 886-2-2260-6878
FAX: 886-2-2260-8030

| | | | | | | |
|----------------------|--|-------------|------|------------------------|------------|-----|
| 品名 TITLE | TERMINAL BLOCK PCB SCREW 5.0mm DIP R/A TYPE | | | | 頁數 Page | 1/1 |
| 品號 PART NO. | 5TS500R-167NXXXLX-01 | | | 繪圖 DRAWN | ERIC | |
| 圖號 DRAWING NO. | GN011-EA272 | 版本 REV. | D | 核對 CHECKED | JOSH | |
| 客戶品號 CUSTOMER P/N | | 比例 SCALE | None | 承認 APPROVED | JASON | |
| 公差 TOLERANCE | | 單位 UNIT | mm | THIRD ANGLE PROJECTION | | |