

SPECIFICATIONS

DIELECTRIC STRENGTH: AC250V /1MIN
 RATING:DC12V,50mA MAX
 CONTACT RESISTANCE:100mΩ MAX
 INSULATION RESISTANCE:100MΩ MIN
 OPERATING LIFE:100,000 CYCLES
 OPERATING FORCE:120gf±30gf OR 180gf±50gf OR 250gf±50gf
 320gf±70gf OR 400gf±100gf OR 600gf±100gf

MATERIALS

BASE:NYLON 6T,BLACK
 TERMINAL:BRASS,SILVER PLATED
 CONTACT:STAINLESS STEEL SILVER PLATED
 COVER:STAINLESS STEEL
 ACTUATOR:SILICONE(H=2.6、3.5、4.3、4.9、5.2)
 LCP,BLACK(H=7.2、7.7)

ORDER INFORMATION

6 S T M S 2 2 - X X X X X X X X A 0 1

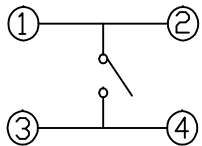
026:H=2.6mm	052:H=5.2mm	120:120gf±30gf	W:NATURAL	N:W/O PEG	H:T/R W/O CAP
035:H=3.5mm	072:H=7.2mm	180:180gf±50gf	U:BLUE	W/O GROUND WITH SHELL	
043:H=4.3mm	077:H=7.7mm	250:250gf±50gf	R:RED		
049:H=4.9mm		320:320gf±70gf	B:BLACK		
		400:400gf±100gf	O:ORANGE		
		600:600gf±100gf			



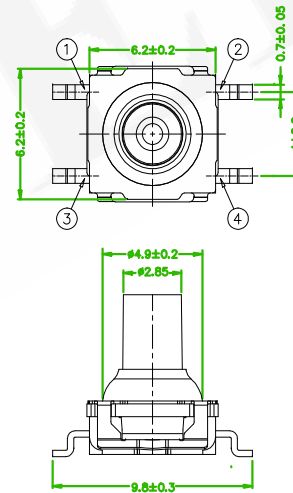
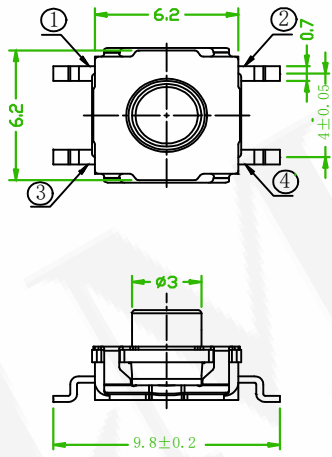
P/N	H	COLOR	MATERIAL	MATERIAL
6STMS22-072180RXXA01	7.2mm	180gf±50gf	RED	LCP
6STMS22-072180BXXA01		BLACK		
6STMS22-072250RXXA01		250gf±50gf	RED	
6STMS22-072250BXXA01	BLACK			
6STMS22-077180RXXA01	7.7mm	180gf±50gf	RED	
6STMS22-077180BXXA01		BLACK		
6STMS22-077250RXXA01		250gf±50gf	RED	
6STMS22-077250BXXA01	BLACK			

OPERATING FORCE FOLLOWS OPTIONS

P/N	H	COLOR	MATERIAL
6STMS22-026XXXUXXA01	2.6mm	BLUE	SILICONE
6STMS22-035XXXWXXA01	3.5mm	NATURAL	
6STMS22-035XXXUXXA01		BLUE	
6STMS22-043XXXWXXA01	4.3mm	NATURAL	
6STMS22-049XXXWXXA01	4.9mm	NATURAL	
6STMS22-052XXXWXXA01	5.2mm	NATURAL	
6STMS22-052XXXUXXA01		BLUE	
6STMS22-052XXXRXXA01		RED	
6STMS22-052XXXOXXA01		ORANGE	

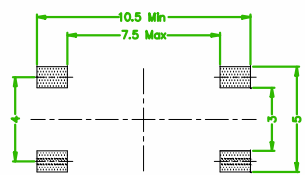


CIRCUIT DIAGRAM



6STMS22-026XXXXXXXXA01
 6STMS22-035XXXXXXXXA01
 6STMS22-043XXXXXXXXA01
 6STMS22-049XXXXXXXXA01
 6STMS22-052XXXXXXXXA01

6STMS22-072XXXXXXXXA01
 6STMS22-077XXXXXXXXA01



RECOMMENDED PCB LAYOUT (PCB TOLERANCE ±0.05)

REC	REC2510000094	Oliver	2025/10/30
REC	REC2507000042	Willy	2025/07/08
BPM	BPM 20250613001	Willy	2025/06/30
REV.	ECN NO. OR DESCRIPTION	REVISED	DATE

糧德精密有限公司
 Amtek Technology Co., Ltd.
 TEL: 886-2-2260-6878
 FAX: 886-2-2260-8030

品名	TACT SWITCH SMT V/T TYPE				頁數	1/1
TITLE					Page	
品號	6STMS22-XXXXXXXXA01			繪圖	JOHN	
PART NO.				DRAWN	2025/06/16	
圖號	GN162-JH412	版本	D	核對	JOSH	
DRAWING NO.		REV.		CHECKED	2025/06/16	
客戶品號		比例	None	承認	JOSH	
CUSTOMER P/N		SCALE		APPROVED	2025/06/16	
公差	16<X≤63 ±0.4	4<X≤16 ±0.3	單位	THIRD ANGLE PROJECTION		
TOLERANCE	X≤4 ±0.2	單位	mm			