

MATERIAL

Contact Pin: Brass

ORDER INFORMATION

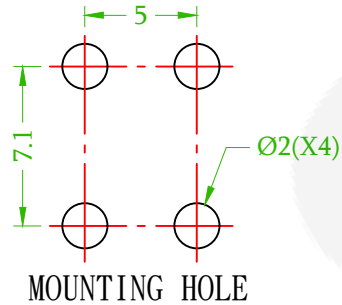
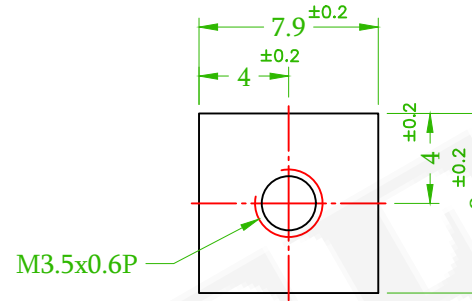
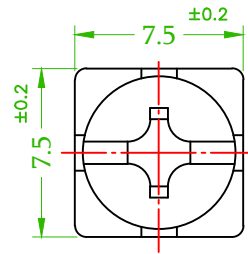
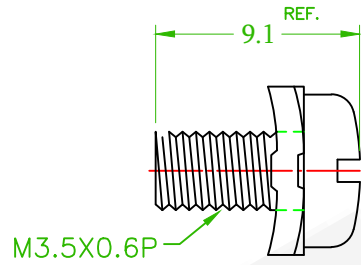
5 G B M - 0 3 8 X X - A 1

◎:Standard Recommend

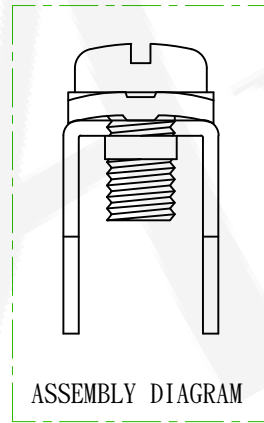
T0: Tin Plated
◎TM: Matte Tin



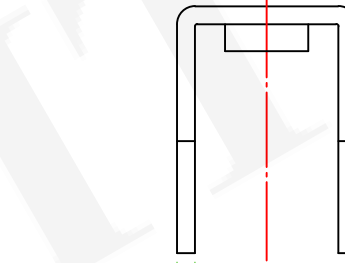
AMTEK 耀德
2023.12.20
Released DCC



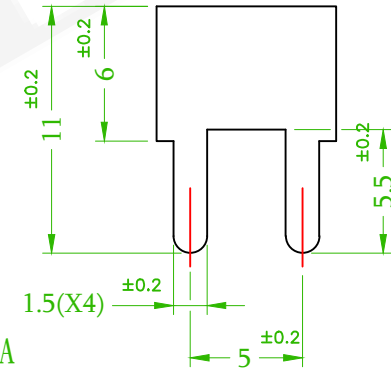
MOUNTING HOLE



ASSEMBLY DIAGRAM



(BODY)PCB-10A



- NOTE:1.THE BEST USE TIME OF TIN PLATING PARTS ARE WITHIN 3 MONTHS SINCE MFG DATE.
2.THE BEST USE TIME OF NICKEL PLATING PARTS ARE WITHIN 6 MONTHS SINCE MFG DATE.
3.FINISH: IF PARTS ARE NOT USED UP PLEASE STORE IN A SEAL BAG.
4.LOAD CURRENT:15A.

(RoHS Compliant)

Pb	<1000PPM
Cd	< 100PPM
Hg	<1000PPM
Cr6+	<1000PPM
PBBs	<1000PPM
PBDEs	<1000PPM

耀德精密有限公司
Amtek Technology Co., Ltd.
TEL: 886-2-2260-6878
FAX: 886-2-2260-8030

品名 TITLE	P.C.B Terminal				頁數 Page	1/1
品號 PART NO.	5GBM-038XX-A1			繪圖 DRAWN	Benson 2019/12/31	
圖號 DRAWING NO.	GW018-BS632	版本 REV.	B	核對 CHECKED	Josh 2019/12/31	
客戶品號 CUSTOMER P/N		比例 SCALE	None	承認 APPROVED	Josh 2019/12/31	
公差 TOLERANCE		單位 UNIT	mm	THIRD ANGLE PROJECTION		

△	QEC NO.:231104 Revise the Plating Options	Gaby	2023/12/07
REV.	ECN NO. OR DESCRIPTION	REVISED	DATE