

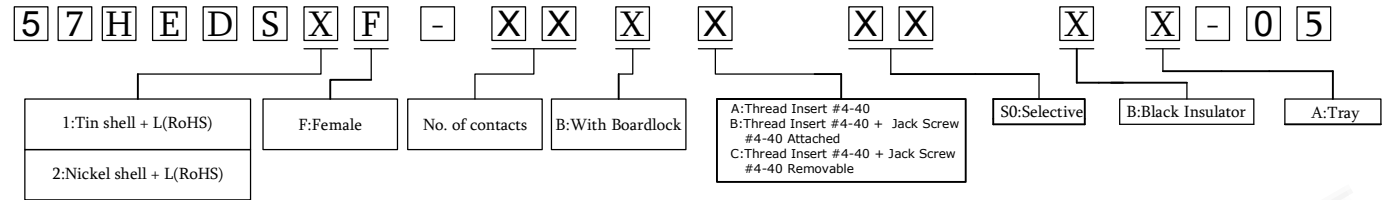
# SPECIFICATIONS

Current Rating: 3 AMP  
 Insulation Resistance: 1000MΩ Min.  
 Contact Resistance: 30mΩ Max.  
 Dielectric Voltage: 500V AC for one minute  
 Operation Temperature: -55°C to +85°C

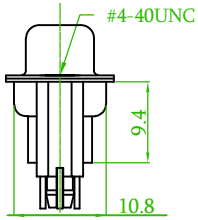
# MATERIAL

Insulator: PBT  
 Terminal: Copper Alloy  
 Shell: SPCC  
 Screw: Iron  
 Boardlock: Copper Alloy

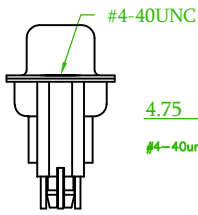
# ORDER INFORMATION



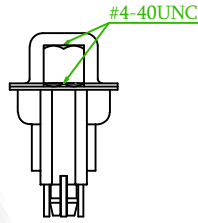
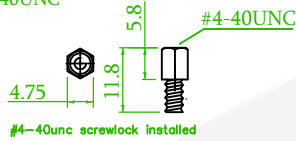
©: Standard Recommend



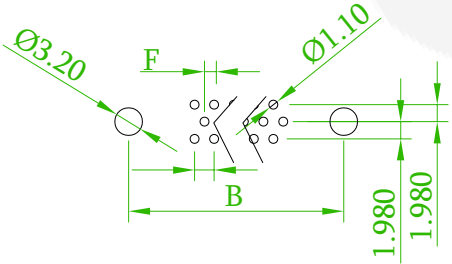
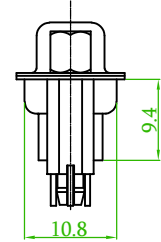
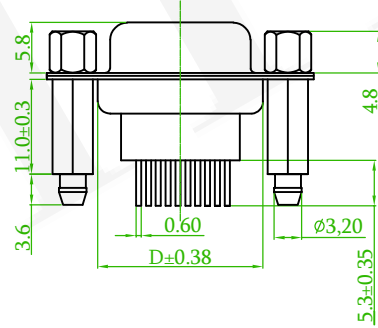
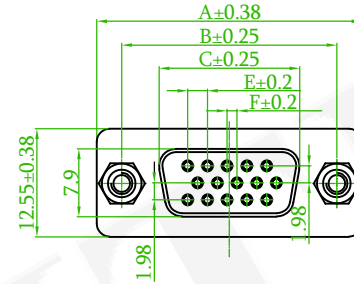
57HEDSXF-XXBAXXXX-05  
Thread Insert #4-40



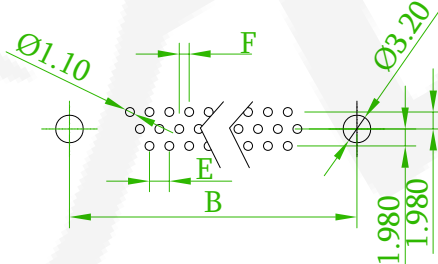
57HEDSXF-XXBBXXXX-05  
Thread Insert #4-40 + Jack Screw #4-40 Attached



57HEDSXF-XXBCXXXX-05  
Thread Insert #4-40 + Jack Screw #4-40 Removable



Recommended PCB Layout  
15 POSITION FEMALE  
(PCB TOLERANCE ±0.05)



Recommended PCB Layout  
26, 44, 62 POSITION FEMALE  
(PCB TOLERANCE ±0.05)

| No. | A     | B     | C     | D     | E    | F     |
|-----|-------|-------|-------|-------|------|-------|
| 15  | 30.81 | 24.99 | 16.33 | 19.15 | 2.29 | 1.145 |
| 26  | 39.14 | 33.32 | 24.75 | 27.65 | 2.29 | 1.145 |
| 44  | 53.05 | 47.04 | 38.33 | 41.10 | 2.29 | 1.145 |
| 62  | 69.32 | 63.50 | 54.75 | 57.33 | 2.41 | 1.205 |

|  |                      |   |             |            |                |                        |
|--|----------------------|---|-------------|------------|----------------|------------------------|
| <br>糧德精密有限公司<br>Amtek Technology Co., Ltd.<br>TEL: 886-2-2268-8036<br>FAX: 886-2-2268-8035 | 品名<br>TITLE          | D-SUB HIGH DENSITY P.C.B STRAIGHT ELEVATED TYPE |             |            |                |                        |
|  | 品號<br>PART NO.       | 57HEDSXF-XXXXXXXX-05                            |             |            | 繪圖<br>DRAWN    | Benson<br>2023/07/25   |
|  | 圖號<br>DRAWING NO.    | GW054-RD028                                     | 版本<br>REV.  | A          | 核對<br>CHECKED  | Josh<br>2023/07/25     |
|  | 客戶品號<br>CUSTOMER P/N |   | 比例<br>SCALE | None       | 承認<br>APPROVED | Josh<br>2023/07/25     |
|  | 公差<br>TOLERANCE      | .X ±0.35<br>.XX ±0.25                           | ANGLE: ±2°  | 單位<br>UNIT | mm             | THIRD ANGLE PROJECTION |

| REV. | ECN NO. OR DESCRIPTION | REVISED | DATE |
|------|------------------------|---------|------|
|      |                        |         |      |