

SPECIFICATIONS

Current Rating: 3 AMP
 Insulation Resistance: 1000MΩ Min.
 Contact Resistance: 20mΩ Max.
 Dielectric Voltage: 500V AC for one minute
 Operation Temperature: -55°C to +105°C

MATERIAL

Insulator: PBT+30% G.F., UL94V-0
 Contact Pin: Copper Alloy
 Shell: SPCC
 Screw: Copper Alloy
 Rear Standing Pillar: Copper Alloy

MECHANICAL

Mating Force: 341g Max.
 Unmating Force: 21g Min.

ORDER INFORMATION

5 7 D B D S X M - X X X X X X - 0 1

1: Tin shell + L(RoHS)
 2: Nickel shell + L(RoHS)
 M: Male
 No. of contacts

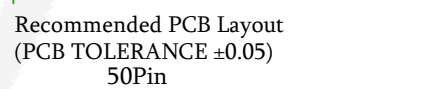
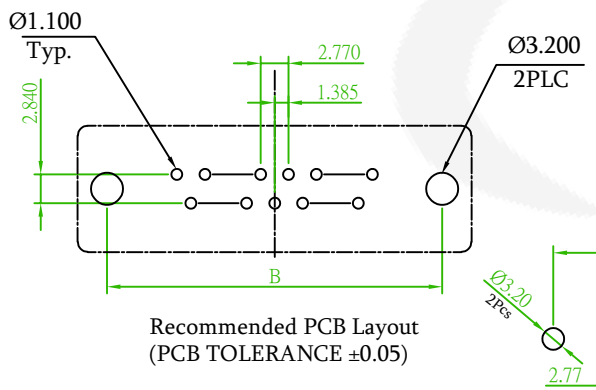
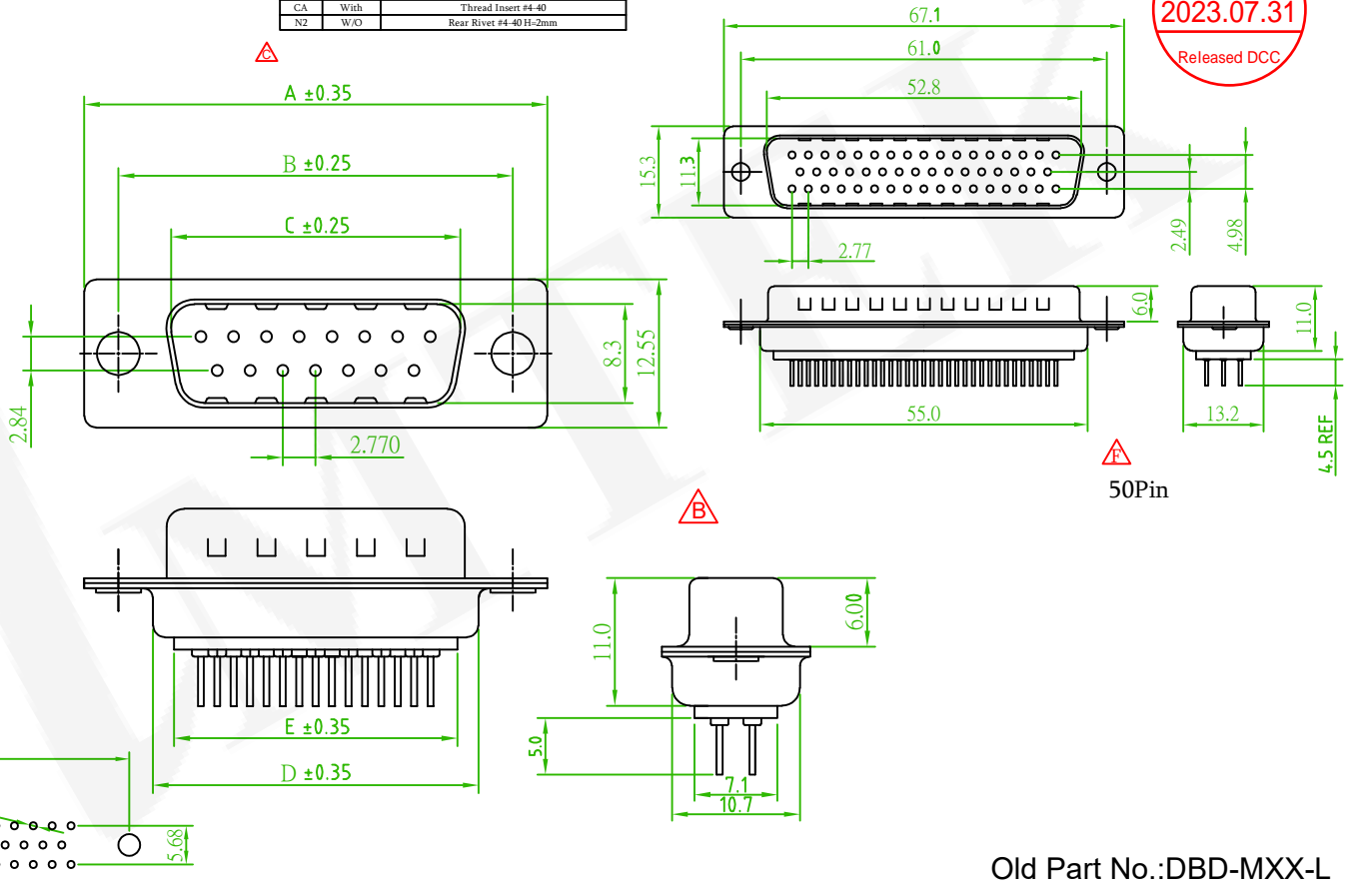
Code	Boardlock	Mounting
NN	W/O	#3.05 Clear Hole
NH	W/O	Front Rivet #4-40, H=5.8mm
NF	W/O	Rear Rivet #4-40, H=4mm
NZ	W/O	Rear Rivet #4-40 H=4mm+Jack Screw #4-40 Attached
NL	W/O	Rear Rivet #4-40 H=4mm+Jack Screw #4-40 Removable
BA	With	Thread Insert #4-40
BB	With	Thread Insert #4-40+Jack Screw Attached
CC	With	Thread Insert #4-40+Jack Screw #4-40 Removable
CA	With	Thread Insert #4-40
NZ	W/O	Rear Rivet #4-40 H=2mm

G0: Gold Flash	S0: Selective	W: White insulator	A: Tray
GA: 5u"	SA: 5u"	B: Black insulator	
GB: 10u"	SB: 10u"	U: Blue insulator	
GC: 20u"	SC: 20u"		
GD: 30u"	SD: 30u"		



AMTEK 糧德
 2023.07.31
 Released DCC

No.	A	B	C	D	E
09	30.81	24.99	16.90	19.15	15.60
15	39.14	33.32	25.35	27.65	24.60
25	53.04	47.04	38.91	41.10	37.80
37	69.32	63.50	55.40	57.33	54.50



Old Part No.: DBD-MXX-L

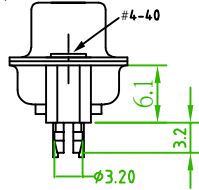
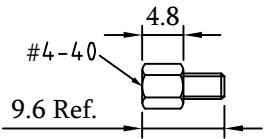
REV.	ECN NO. OR DESCRIPTION	REVISED	DATE
△x1	Add the 50Pin	Alice	2023/07/31
△x3	ECN NO.: 230524 Revise the drawing	Alice	2023/06/15
△x6	ECN NO.: 221201 Revise the drawing	Rex	2023/02/13
△x2	ECN NO.: 220118, Add the mating face options	Benson	2022/02/24

糧德精密有限公司
 Amtek Technology Co., Ltd.
 TEL: 886-2-2260-6878
 FAX: 886-2-2260-8030

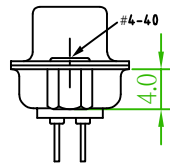
品名 TITLE	D-SUB P.C.B STRAIGHT TYPE				頁數 Page	1/2
品號 PART NO.	57DBDSXM-XXXXXXXX-01				繪圖 DRAWN	Roy
圖號 DRAWING NO.	GW054-RL785	版本 REV.	F	核對 CHECKED	Jason	2018/10/01
客戶品號 CUSTOMER P/N		比例 SCALE	None	承認 APPROVED	Jason	2018/10/01
公差 TOLERANCE	△ .X ±0.35 .XX ±0.25	單位 UNIT	mm	THIRD ANGLE PROJECTION		



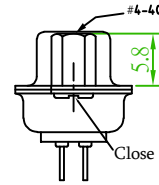
AMTEK 糧德
2023.07.31
Released DCC



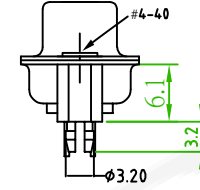
57DBDSXM-XXBBXXXA-01
With Boardlock
Thread Insert #4-40
+Jack Screw #4-40 Attached



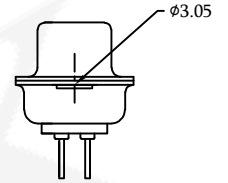
57DBDSXM-XXNFXXXA-01
W/O Boardlock
Rear Rivet #4-40, H=4mm



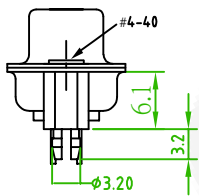
57DBDSXM-XXNHXXXA-01
W/O Boardlock
Front Rivet #4-40, H=5.8mm



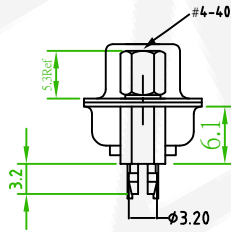
57DBDSXM-XXBAXXXXA-01
With Boardlock
Thread Insert #4-40



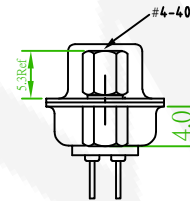
57DBDSXM-XXNNXXXA-01
W/O Boardlock
Clear Hole



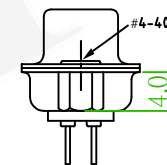
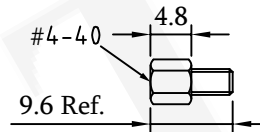
57DBDSXM-XXCAXXXXA-01
With Boardlock
Thread Insert #4-40



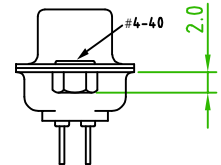
57DBDSXM-XXCCXXXA-01
With Boardlock
Thread Insert #4-40
+Jack Screw #4-40 Removable



57DBDSXM-XXNLXXXA-01
W/O Boardlock
Rear Rivet #4-40 H=4mm
+Jack Screw Removable



57DBDSXM-XXNZXXXA-01
W/O Boardlock
Rear Rivet #4-40 H=4mm+
Jack Screw Attached



57DBDSXM-XXN2XXXA-01
Rear Rivet #4-40 H=2mm

Old Part No.:DBD-MXX-L

△x1	Add the 50Pin	Alice	2023/07/31
△x3	ECN NO.: 230524 Revise the drawing	Alice	2023/06/15
△x6	ECN NO.: 221201 Revise the drawing	Rex	2023/02/13
△x2	ECN NO.: 220118 ,Add the mating face options	Benson	2022/02/24
REV.	ECN NO. OR DESCRIPTION	REVISED	DATE

糧德精密有限公司
Amtek Technology Co., Ltd.
TEL: 886-2-2260-6878
FAX: 886-2-2260-8030

品名 TITLE	D-SUB P.C.B STRAIGHT TYPE				頁數 Page	2/2
品號 PART NO.	57DBDSXM-XXXXXXXX-01		繪圖 DRAWN	Roy		2017/06/13
圖號 DRAWING NO.	GW054-RL785	版本 REV.	F	核對 CHECKED	Josh 2018/10/01	
客戶品號 CUSTOMER P/N		比例 SCALE	None	承認 APPROVED	Jason 2018/10/01	
公差 TOLERANCE	△ .X ±0.35 .XX ±0.25	單位 UNIT	mm	THIRD ANGLE PROJECTION		