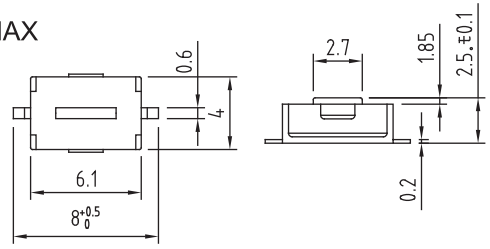


T act Switch



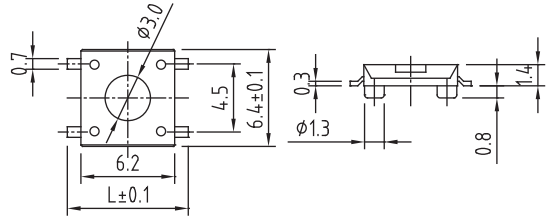
1. OPERATION FORCE: 180±50gf
2. TRAVEL: 0.25±0.2/-0.1mm
3. CONTACT RESISTANCE: 100mΩ MAX
4. GENERAL TOLERANCE: ±0.3



SWTA6607S-180-L



1. Rating : DC 12V. 50mA
2. Travel : 0.25±0.1m/m
3. Operating Force : 160 ±30gf or 250 ±50gf
4. Life : 100,000 Cycles Min

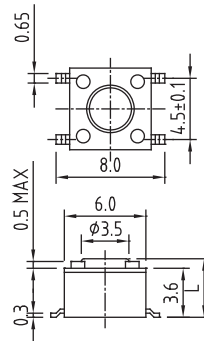


SWTA6617X-160-L
SWTA6617X-250-L

Part No:	L
SWTA6617	8.0mm
SWTA6617A	10.0mm



1. Rating : DC 12V. 50mA
2. Travel : 0.25±0.1m/m
3. Operating Force : 130 or 160 ±30gf or 250 ±50gf
4. Contact Resistance: 50mΩ MAX
5. Life : 100,000 Cycles Min

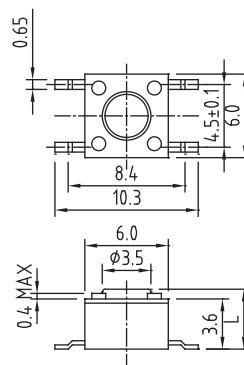


Part No:	L
SWTA6647N	4.3mm
SWTA6647NA	5.0mm
SWTA6647NB	7.0mm
SWTA6647NC	8.0mm
SWTA6647ND	9.5mm
SWTA6647NE	7.3mm
SWTA6647NF	12.5mm
SWTA6647NG	13.5mm

SWTA6647NX-130-L
SWTA6647NX-160-L
SWTA6647NX-250-L



1. Rating : DC 12V. 50mA
2. Travel : 0.25±0.1m/m
3. Operating Force : 130 or 160 ±30gf or 250 ±50gf
4. Contact Resistance: 50mΩ MAX
5. Life : 100,000 Cycles Min

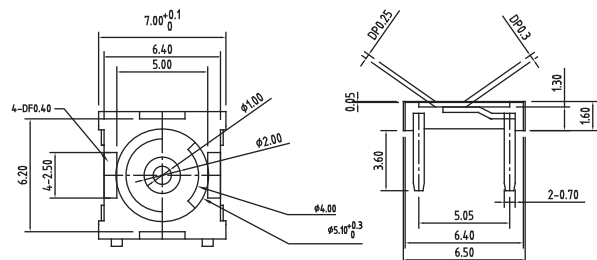


Part No:	L
SWTA6647S	4.3mm
SWTA6647SA	5.0mm
SWTA6647SB	7.0mm
SWTA6647SC	8.0mm
SWTA6647SD	9.5mm
SWTA6647SE	7.3mm
SWTA6647SF	12.5mm
SWTA6647SG	13.5mm

SWTA6647SX-130-L
SWTA6647SX-160-L
SWTA6647SX-250-L



1. Travel : 0.25±0.1m/m
2. Initial Contact Resistance: 500mΩ MAX



SWTA7722-L