

CONNECTORS MANUFACTURER



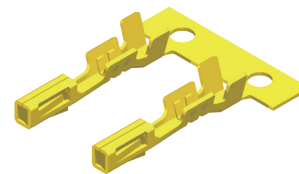
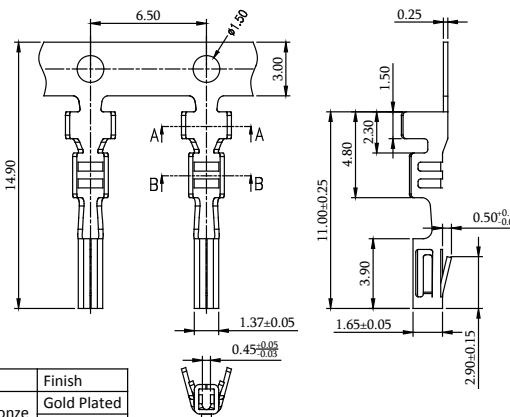
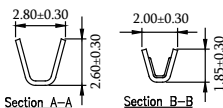
Old P/N.:2553 Series

2.54mm Terminal / Housing / Wafer SMT & R/A & Straight Type

Specifications

Current Rating: 3A AC,DC
 Voltage Rating: 675V AC,DC
 Temperature Range: Housing: -25°C to +105°C
 Wafer: -55°C to +125°C

Contact Resistance: 20mΩ Max
 Insulation Resistance: 1000MΩ Min
 Withstanding Voltage: 1000V AC/minute
 Terminal: Brass / Tin Plated
 Material: Housing: Nylon 66, UL94V-2
 Wafer: LCP, UL94V-0

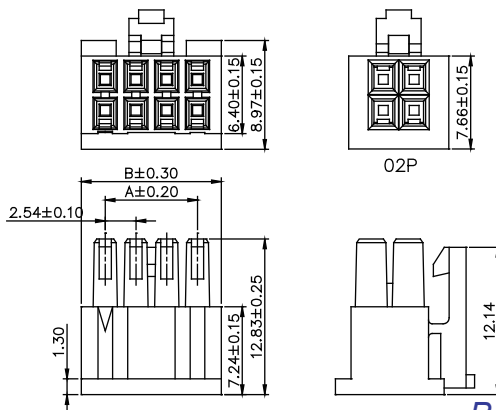


P/N.:5T2553N-PXR-01

T0: Tin plated
 G0: Gold plated

| Part No. | Wire Range | Insulation O.D. | Material | Finish |
|-------------|------------|-----------------|-----------------|-------------|
| 5T2553N-PG0 | #20-#24 | 1.55mm(Max) | Phosphor Bronze | Gold Plated |
| 5T2553N-PT0 | | | | Tin Plated |

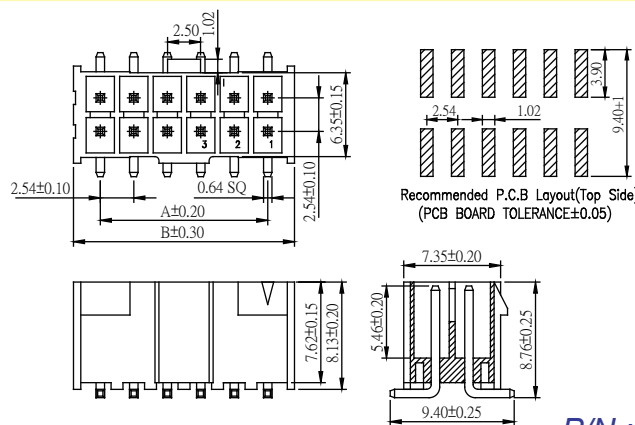
| No. of Contacts | Dimensions | | No. of Contacts | Dimensions | |
|-----------------|------------|-------|-----------------|------------|-------|
| | A | B | | A | B |
| 2x2 | 2.54 | 8.26 | 2x14 | 33.02 | 36.96 |
| 2x3 | 5.08 | 9.02 | 2x15 | 35.56 | 39.50 |
| 2x4 | 7.62 | 11.56 | 2x16 | 38.10 | 42.04 |
| 2x5 | 10.16 | 14.10 | 2x17 | 40.64 | 44.58 |
| 2x6 | 12.70 | 16.64 | 2x18 | 43.18 | 47.12 |
| 2x7 | 15.24 | 19.18 | 2x19 | 45.72 | 49.66 |
| 2x8 | 17.78 | 21.72 | 2x20 | 48.26 | 52.20 |
| 2x9 | 20.32 | 24.26 | 2x21 | 50.80 | 54.74 |
| 2x10 | 22.86 | 26.80 | 2x22 | 53.34 | 57.28 |
| 2x11 | 25.40 | 29.34 | 2x23 | 55.88 | 59.82 |
| 2x12 | 27.94 | 31.88 | 2x24 | 58.42 | 62.36 |
| 2x13 | 30.48 | 34.42 | 2x25 | 60.96 | 64.90 |



P/N.:5H2553N0-2XXWBL00-01

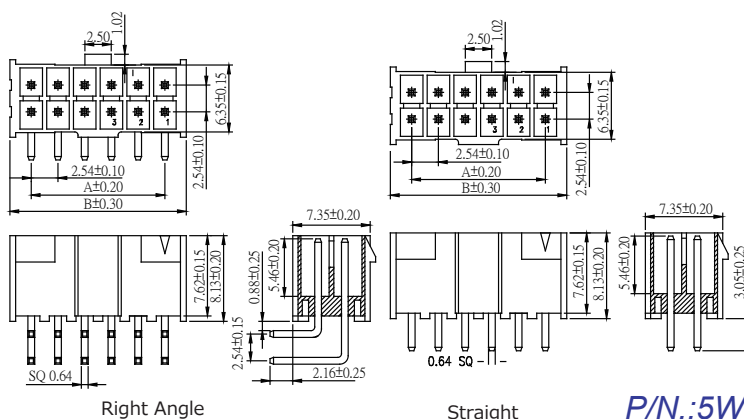
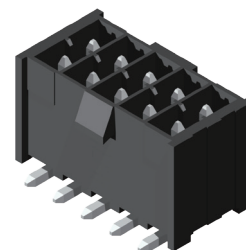


| No. of Contacts | Dimensions | |
|-----------------|------------|-------|
| | A | B |
| 2x2 | 2.54 | 6.60 |
| 2x3 | 5.08 | 9.14 |
| 2x4 | 7.62 | 11.68 |
| 2x5 | 10.16 | 14.22 |
| 2x6 | 12.70 | 16.76 |
| 2x7 | 15.24 | 19.30 |
| 2x8 | 17.78 | 21.84 |
| 2x9 | 20.32 | 24.38 |
| 2x10 | 22.86 | 26.92 |
| 2x11 | 25.40 | 29.46 |
| 2x12 | 27.94 | 32.00 |
| 2x13 | 30.48 | 34.54 |
| 2x14 | 33.02 | 37.08 |
| 2x15 | 35.56 | 39.62 |
| 2x16 | 38.10 | 42.16 |
| 2x17 | 40.64 | 44.70 |
| 2x18 | 43.18 | 47.24 |
| 2x19 | 45.72 | 49.78 |
| 2x20 | 48.26 | 52.32 |
| 2x21 | 50.80 | 54.86 |
| 2x22 | 53.34 | 57.40 |
| 2x23 | 55.88 | 59.94 |
| 2x24 | 58.42 | 62.48 |
| 2x25 | 60.96 | 65.02 |



Recommended P.C.B Layout (Top Side)
 (PCB BOARD TOLERANCE±0.05)

P/N.:5W2553M0-2XXT0BBU-01

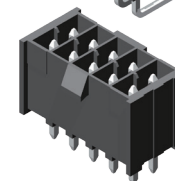
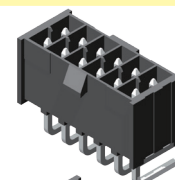


Right Angle

Straight

P/N.:5W2553X0-2XXT0BBU-01

R: Right Angle
 S: Straight



Housing Wafer Terminal



RoHS