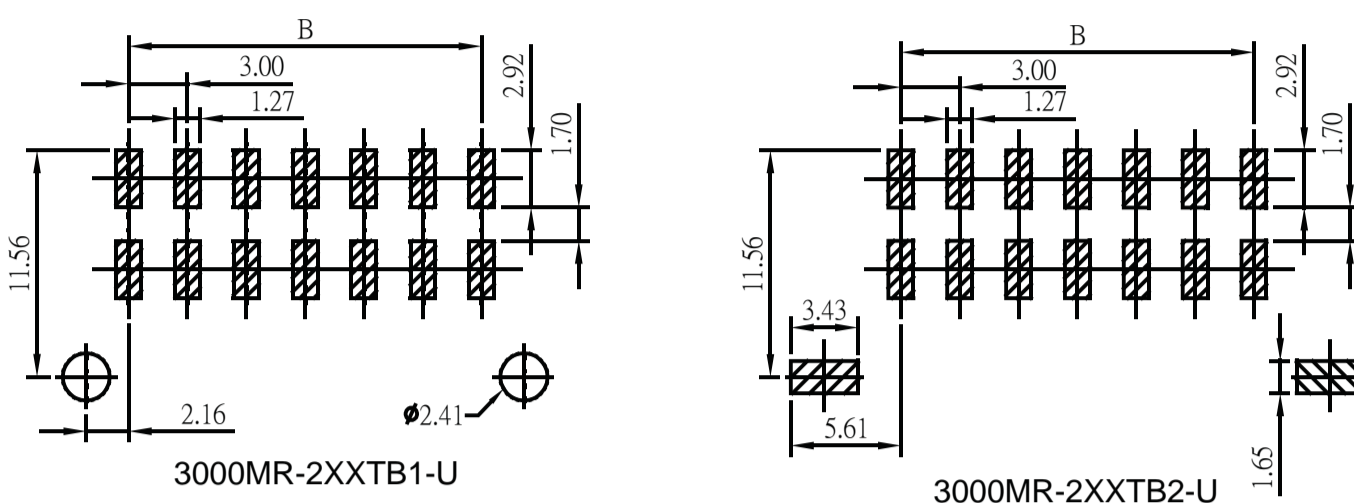


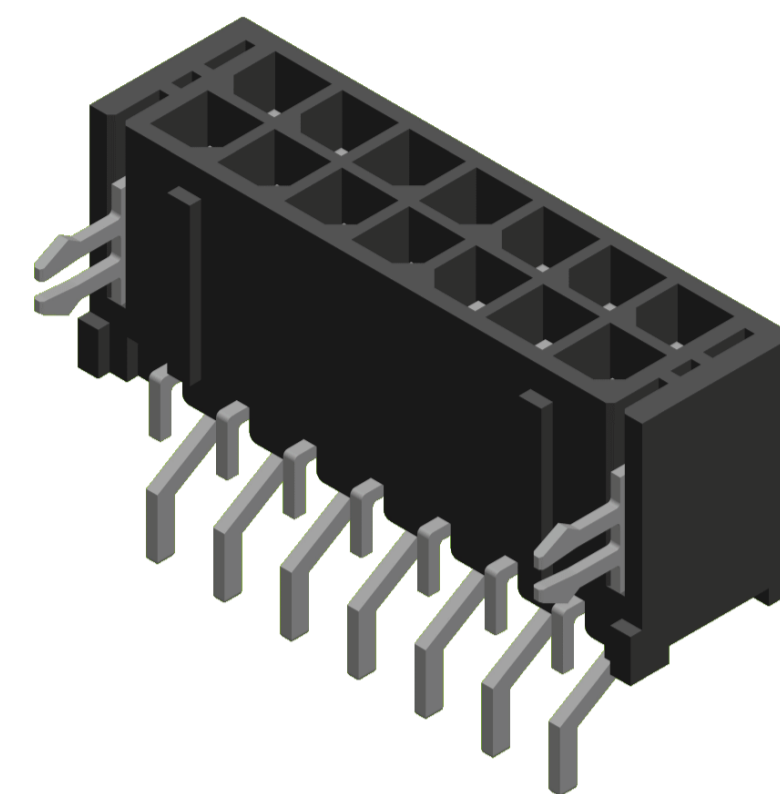
3.0mm Wafer Dual rows Wafer SMT Straight & SMT Right Angle Type

SPECIFICATIONS

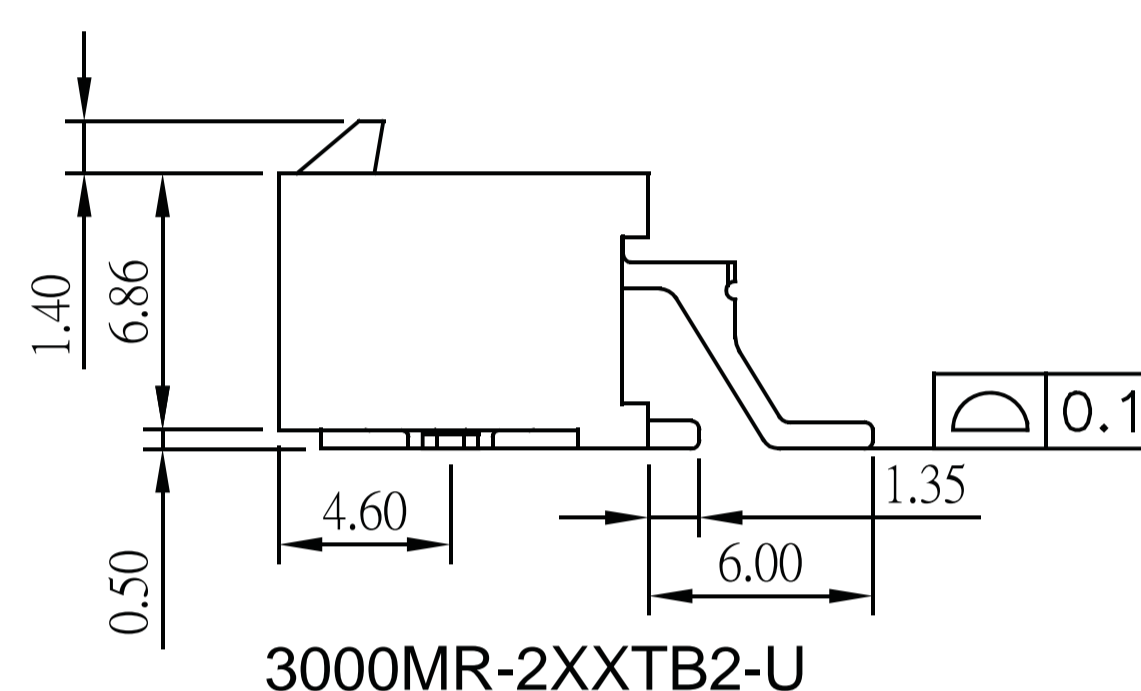
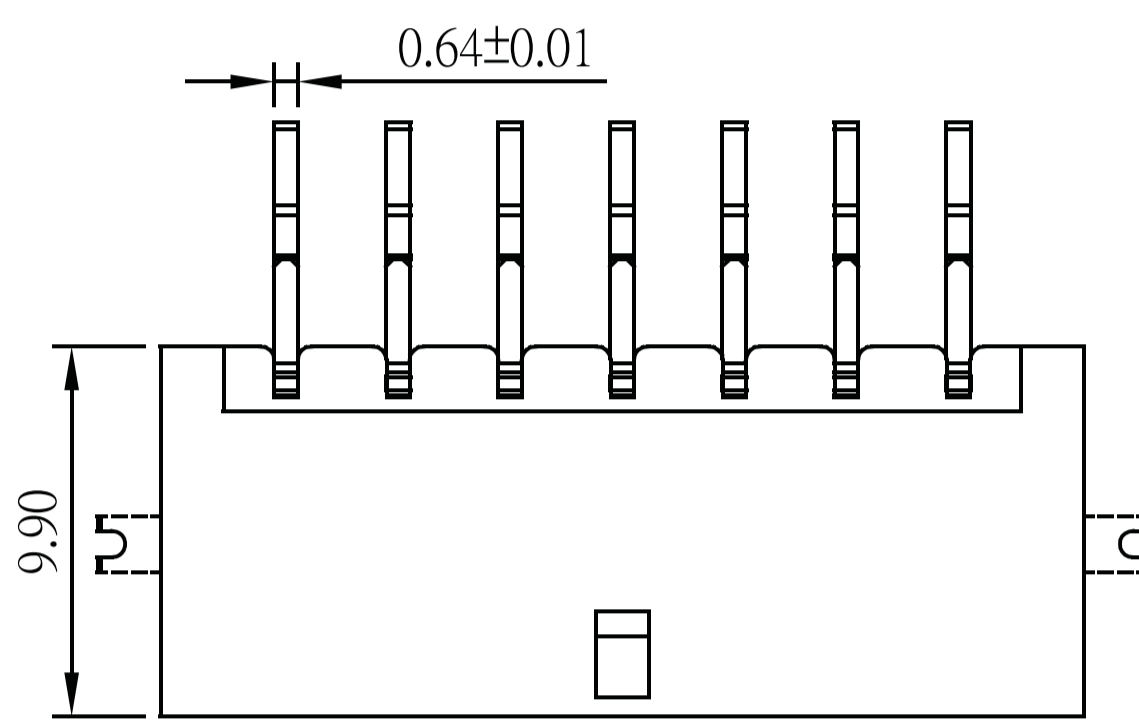
Current Rating: 5A AC,DC
 Voltage Rating: 250V AC,DC
 Temperature Range: $-25^{\circ}\text{C} \sim +105^{\circ}\text{C}$
 Contact Resistance: 10m Ω Max
 Insulation Resistance: 1000M Ω Min
 Withstanding Voltage: 1500V AC/minute
 Pin Material: Brass/Tin-plated
 Material: Nylon 46,UL94V-0
 Color: Black



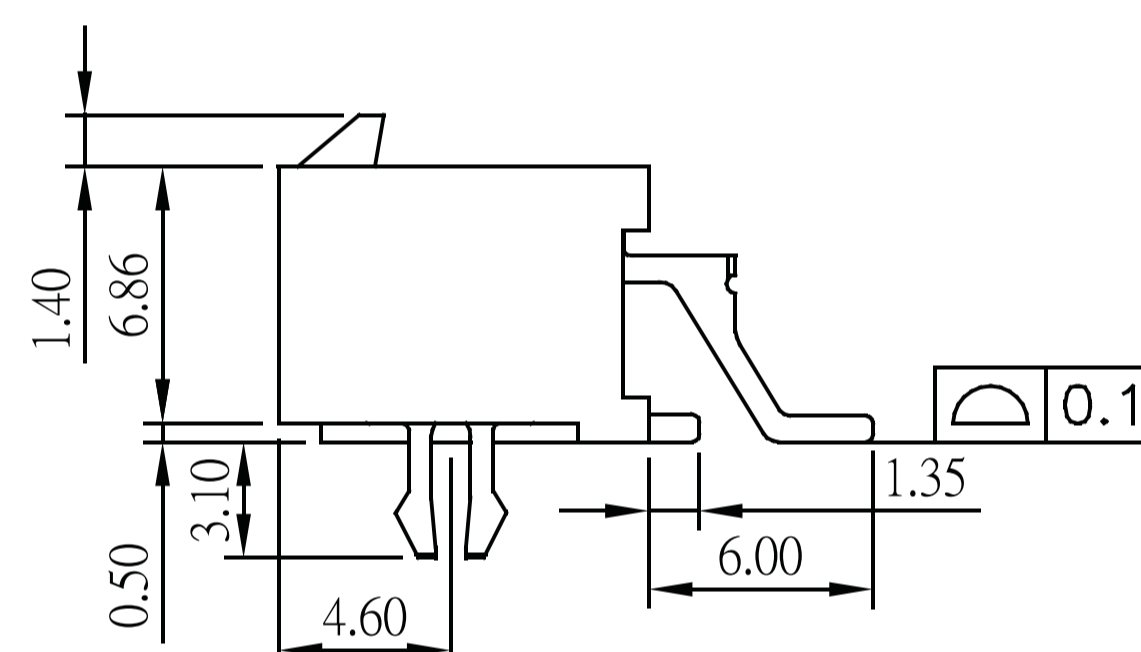
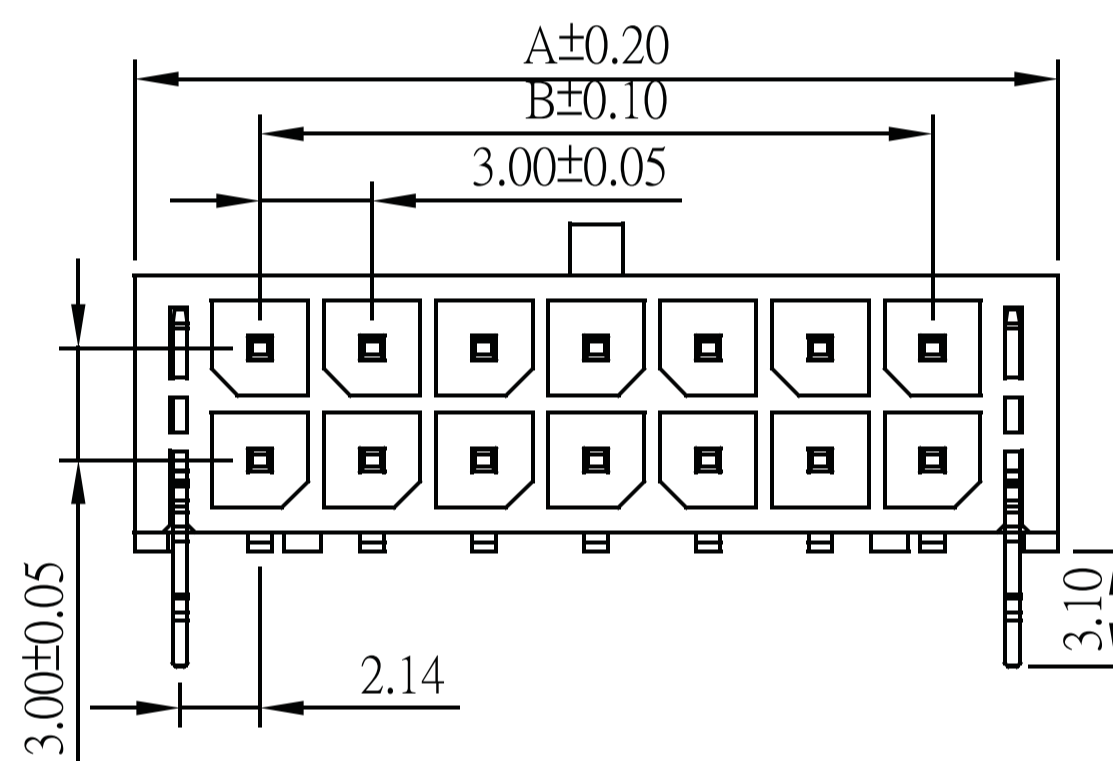
Recommended PCB Layout
(PCB TOLERANCE ± 0.05)



No. of Contacts	Dimensions	
	A	B
01	6.70	---
02	9.70	3.00
03	12.70	6.00
04	15.70	9.00
05	18.70	12.00
06	21.70	15.00
07	24.70	18.00
08	27.70	21.00
09	30.70	24.00
10	33.70	27.00
11	36.70	30.00
12	39.70	33.00



3000MR-2XXTB2-U

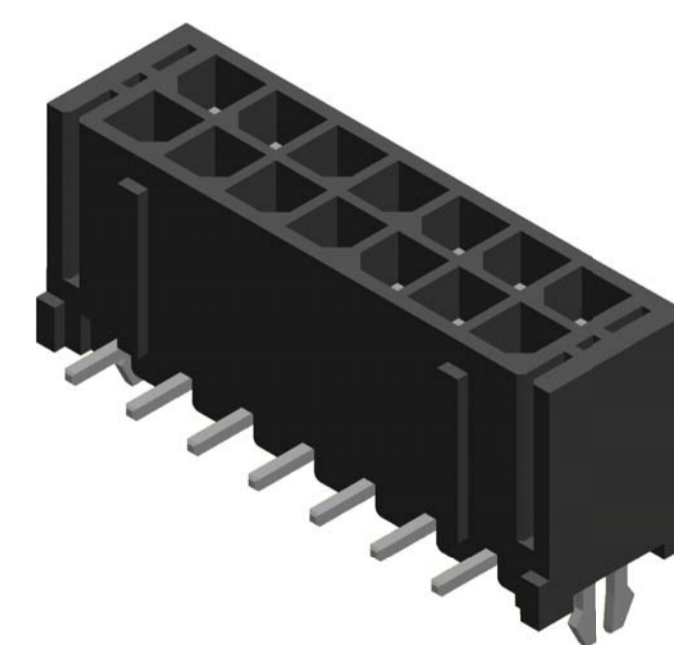


3000MR-2XXTB1-U

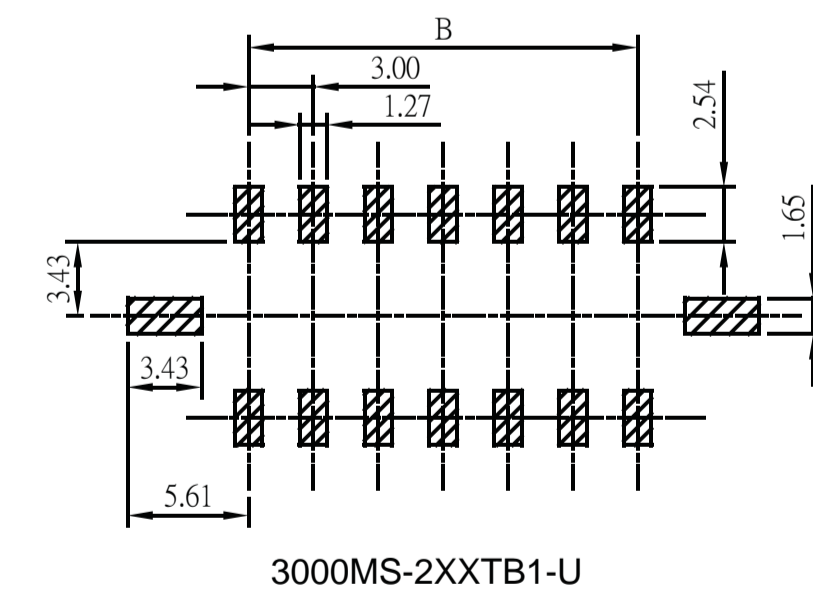
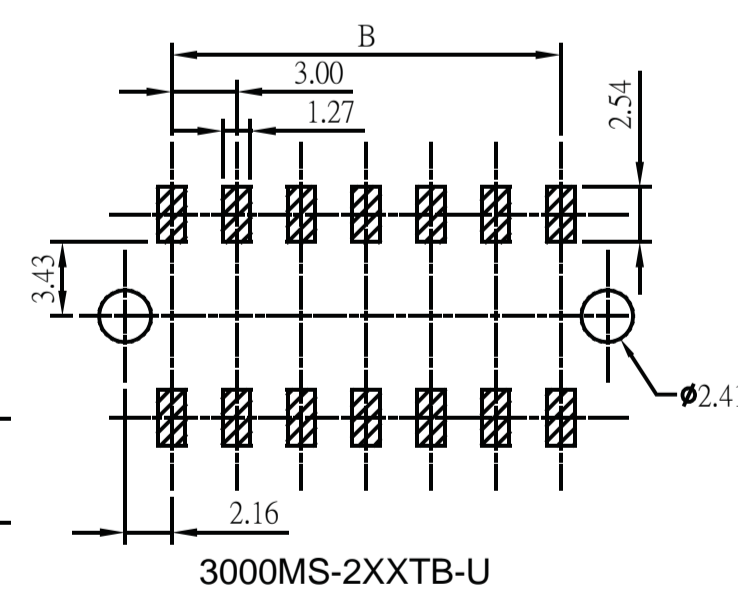
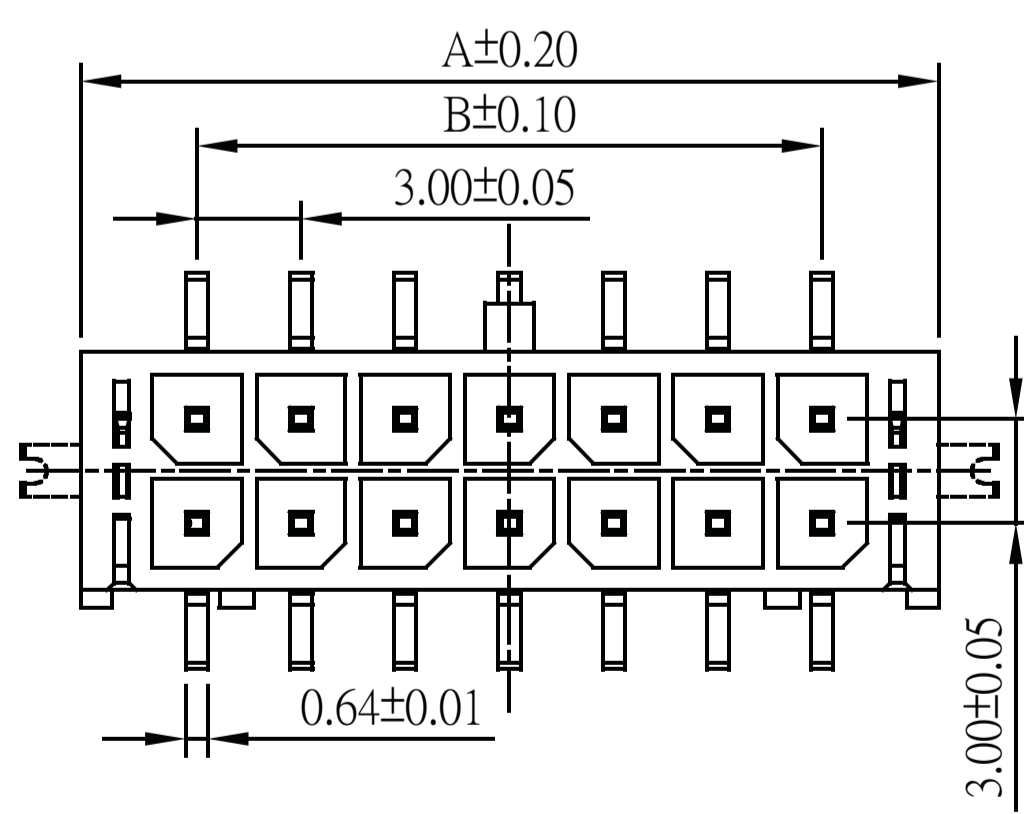
Part No.:3000MR-2XXTBX-U

SPECIFICATIONS

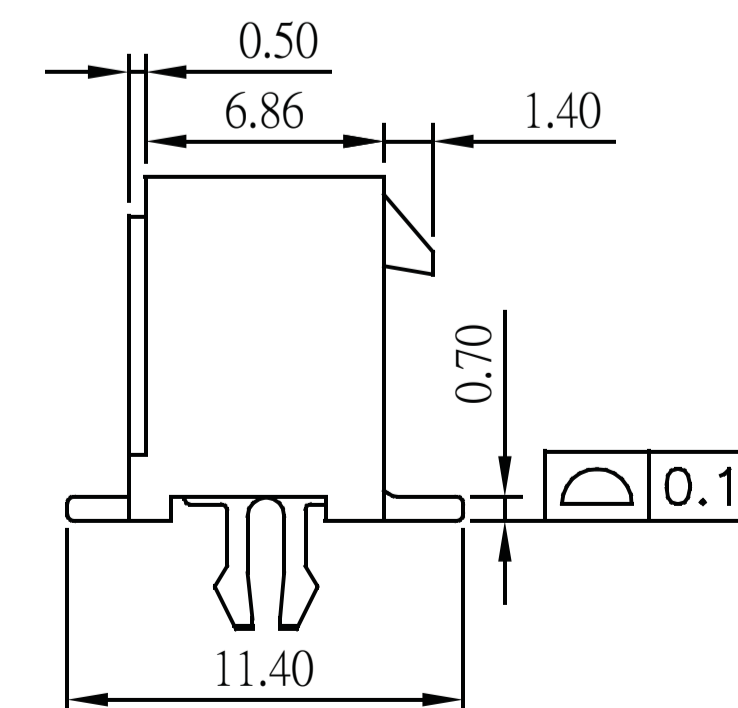
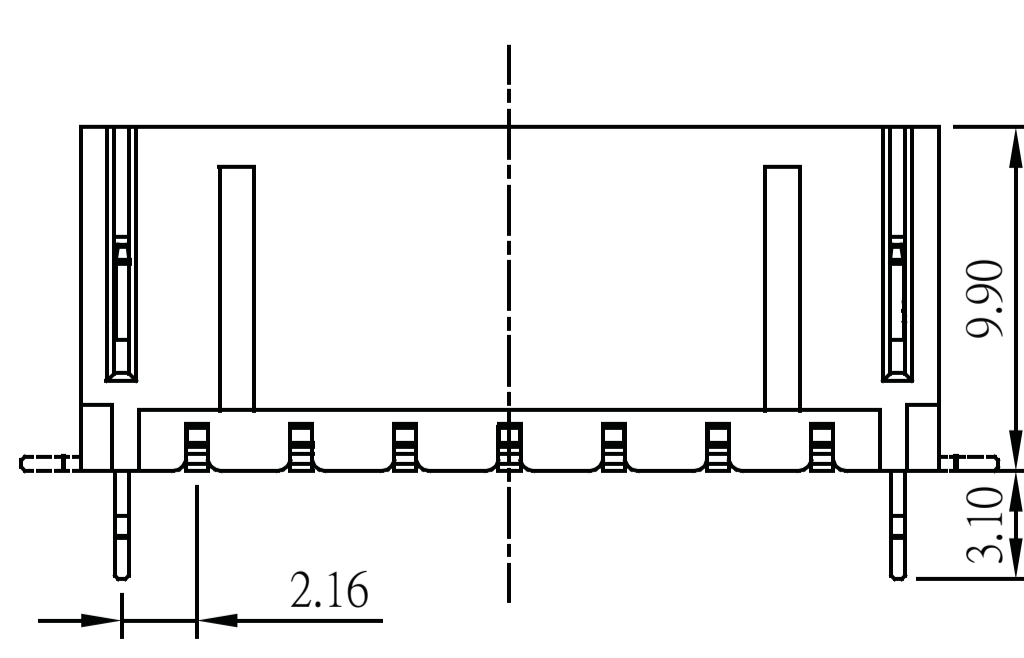
Current Rating: 5A AC,DC
 Voltage Rating: 250V AC,DC
 Temperature Range: $-25^{\circ}\text{C} \sim +105^{\circ}\text{C}$
 Contact Resistance: 10m Ω Max
 Insulation Resistance: 1000M Ω Min
 Withstanding Voltage: 1500V AC/minute
 Pin Material: Brass/Tin-plated
 Material: Nylon 46,UL94V-0
 Color: Black



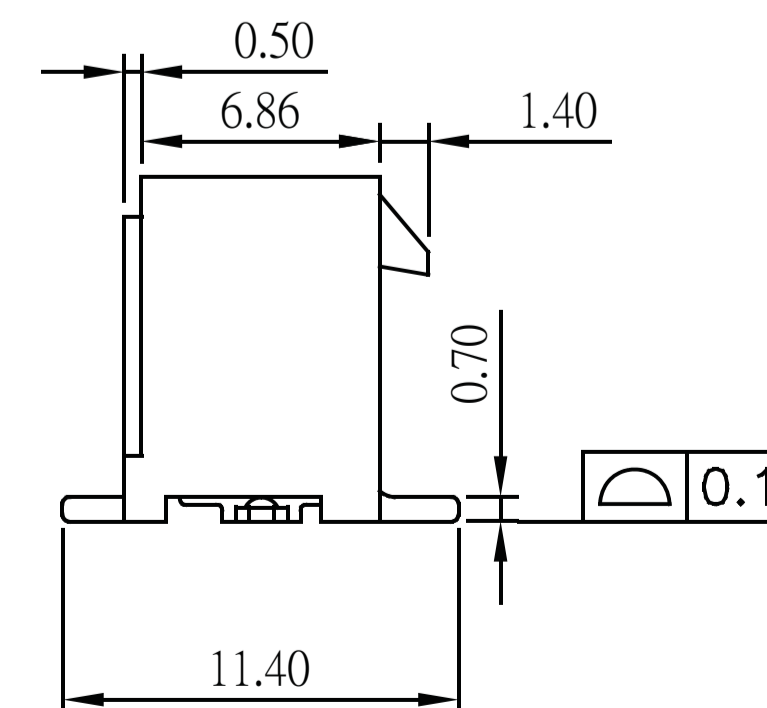
No. of Contacts	Dimensions	
	A	B
01	6.70	---
02	9.70	3.00
03	12.70	6.00
04	15.70	9.00
05	18.70	12.00
06	21.70	15.00
07	24.70	18.00
08	27.70	21.00
09	30.70	24.00
10	33.70	27.00
11	36.70	30.00
12	39.70	33.00



Recommended PCB Layout
(PCB TOLERANCE ± 0.05)



3000MS-2XXTB1-U



3000MS-2XXTB2-U

Part No.:3000MS-2XXTBX-U