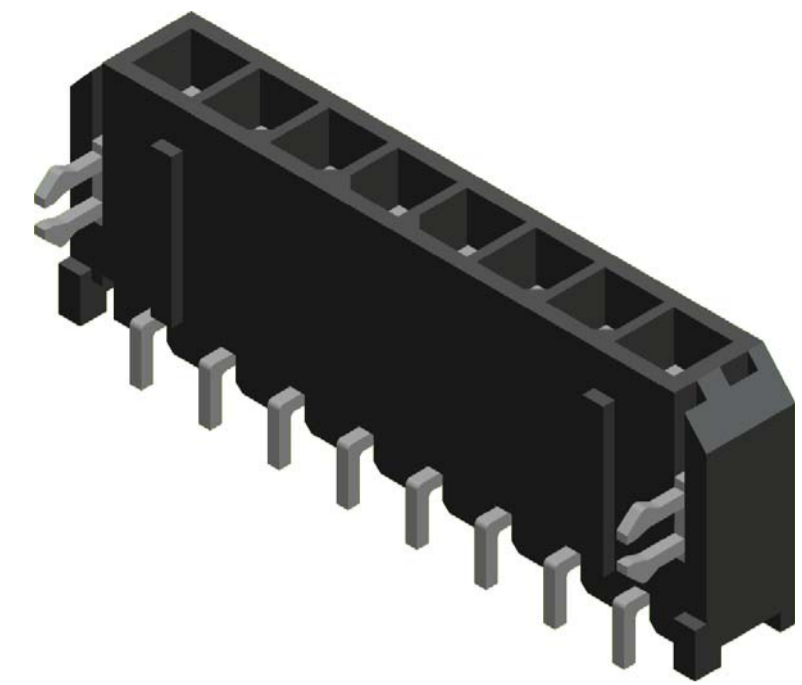




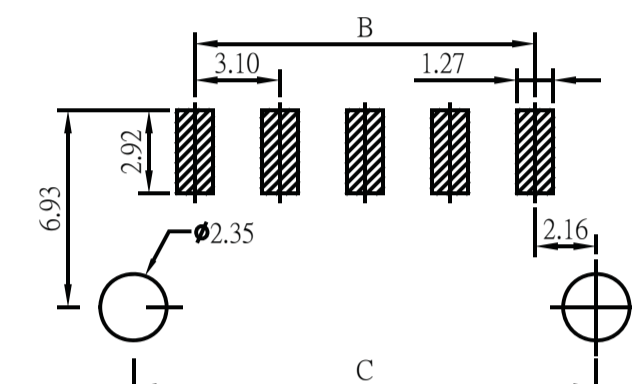
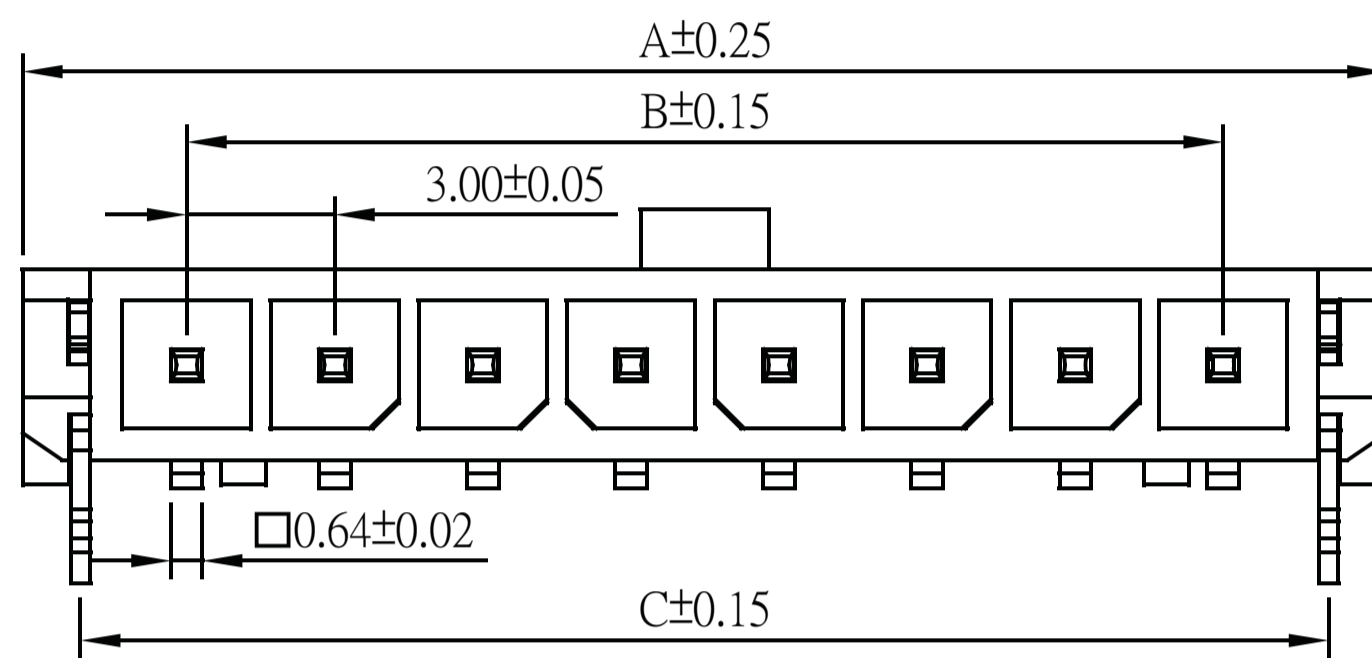
3.0mm Wafer Single row SMT Right Angle Type

SPECIFICATIONS

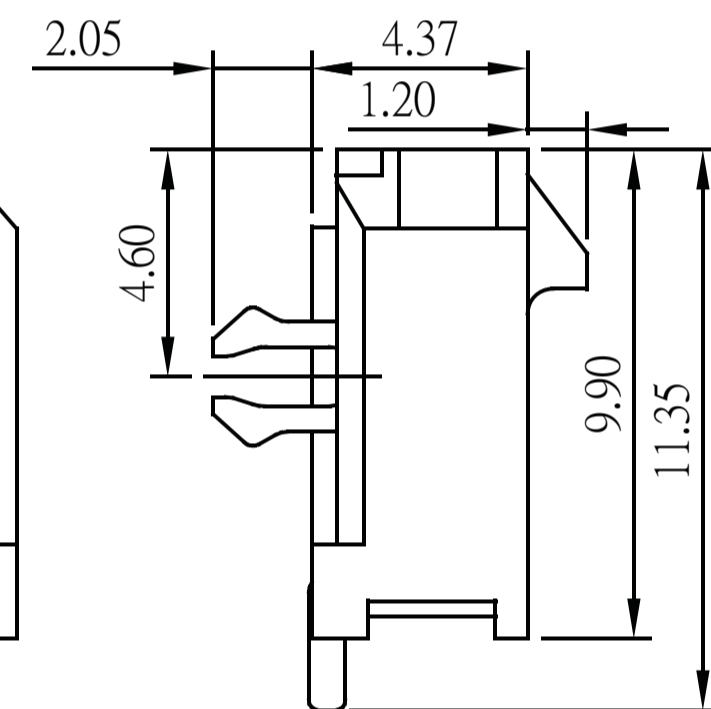
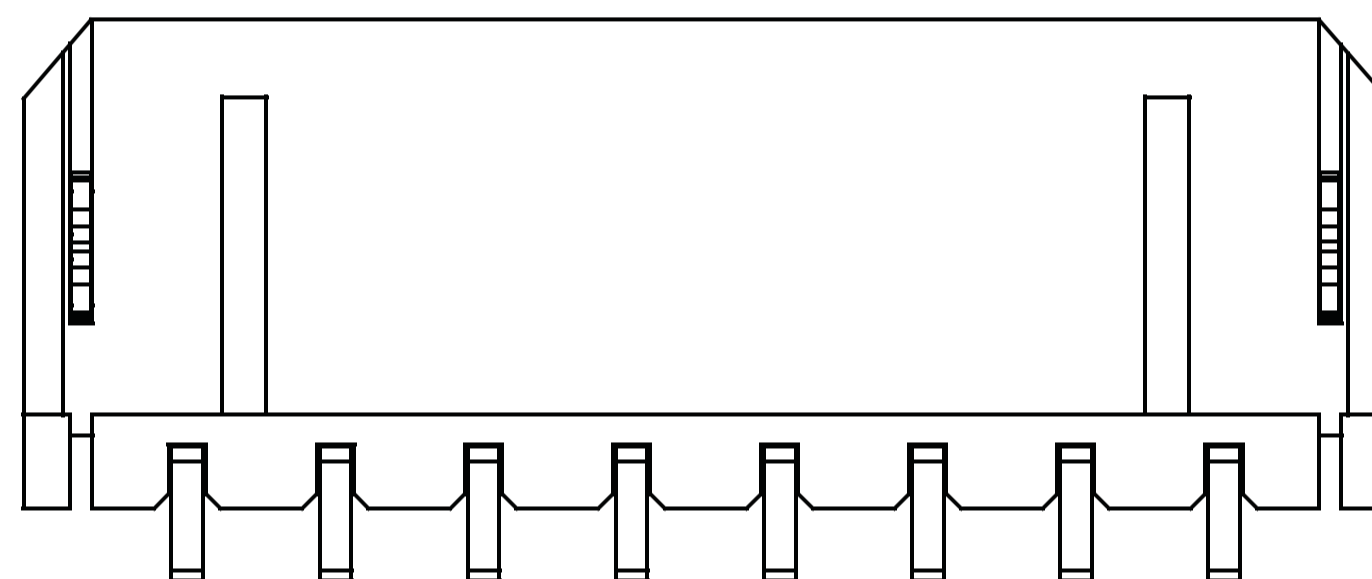
Current Rating: 5A AC,DC
 Voltage Rating: 250V AC,DC
 Temperature Range: -25°C ~ +105°C
 Contact Resistance: 10mΩ Max
 Insulation Resistance: 1000MΩ Min
 Withstanding Voltage: 1500V AC/minute
 Pin Material: Brass/Tin-plated
 Material: Nylon 46,UL94V-0
 Color: Black



PART NO.	Dimensions		
	A	B	C
3000MR-102TB1-U	9.65	3.00	7.30
3000MR-103TB1-U	12.65	6.00	10.30
3000MR-104TB1-U	15.65	9.00	13.30
3000MR-105TB1-U	18.65	12.00	16.30
3000MR-106TB1-U	21.65	15.00	19.30
3000MR-107TB1-U	24.65	18.00	22.30
3000MR-108TB1-U	27.65	21.00	25.30
3000MR-109TB1-U	30.65	24.00	28.30
3000MR-110TB1-U	33.65	27.00	31.30
3000MR-111TB1-U	36.65	30.00	34.30
3000MR-112TB1-U	39.65	33.00	37.30



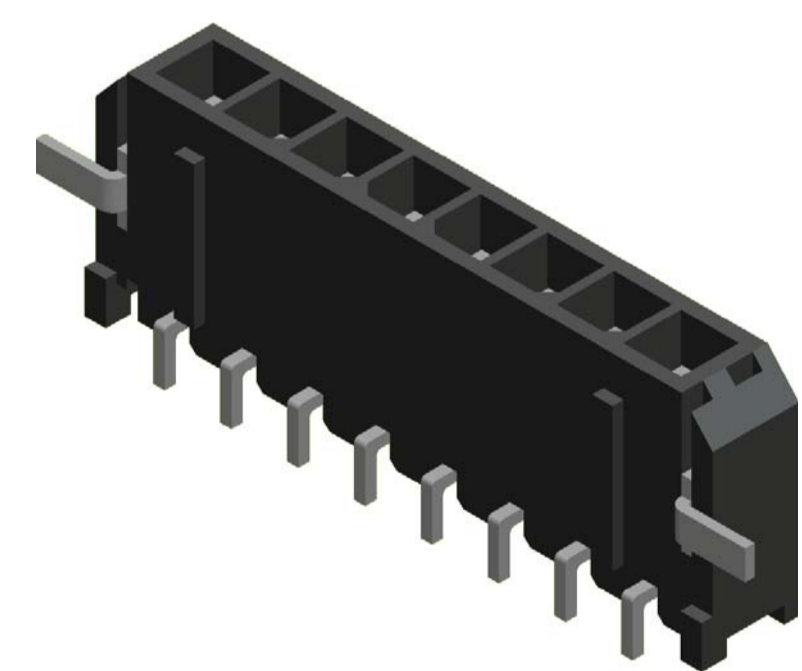
Recommended PCB Layout
(PCB TOLERANCE ±0.05)



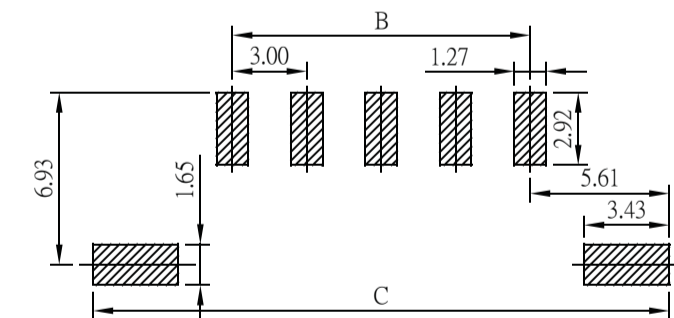
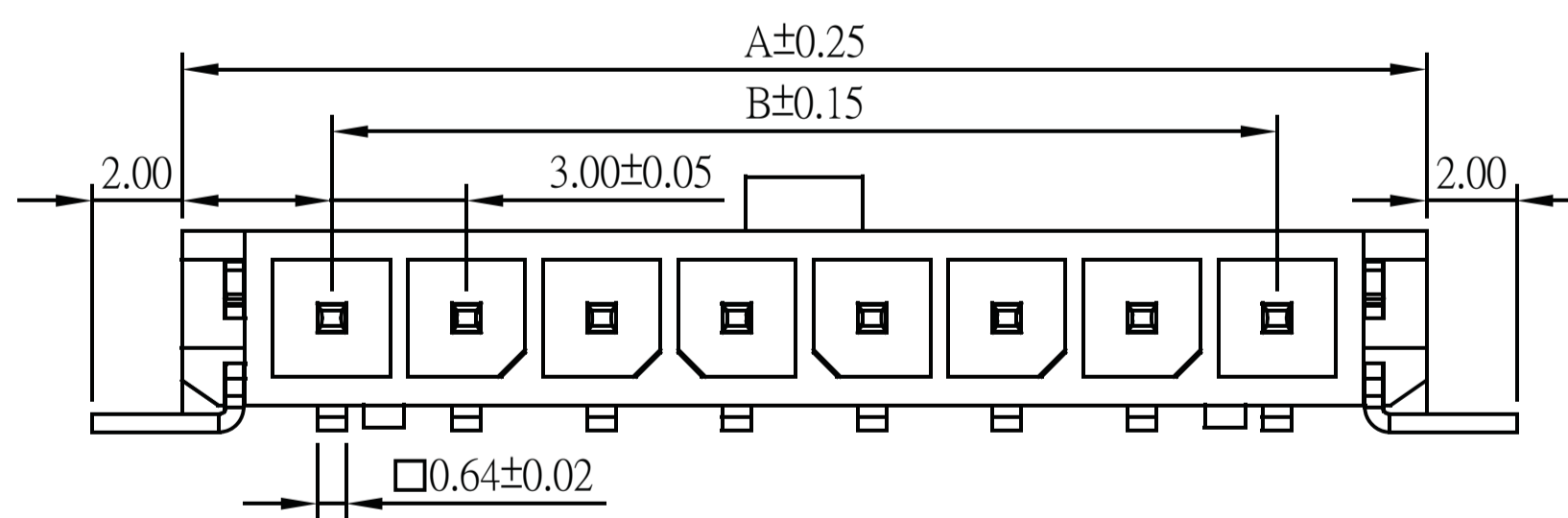
Part No.:3000MR-1XXTB1-U

SPECIFICATIONS

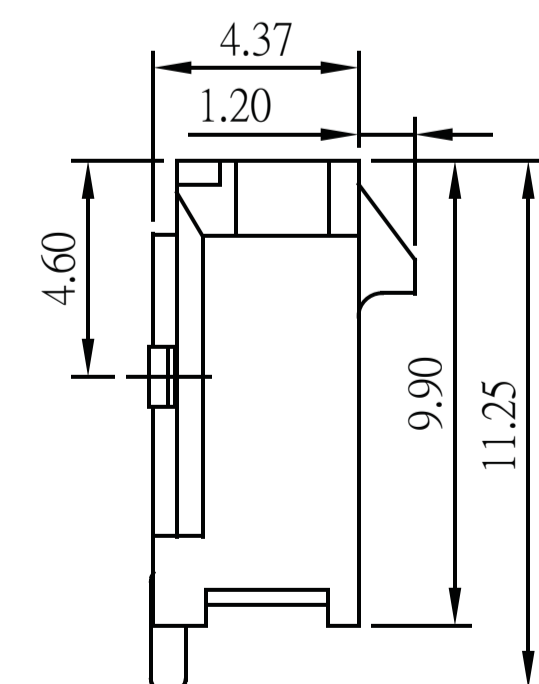
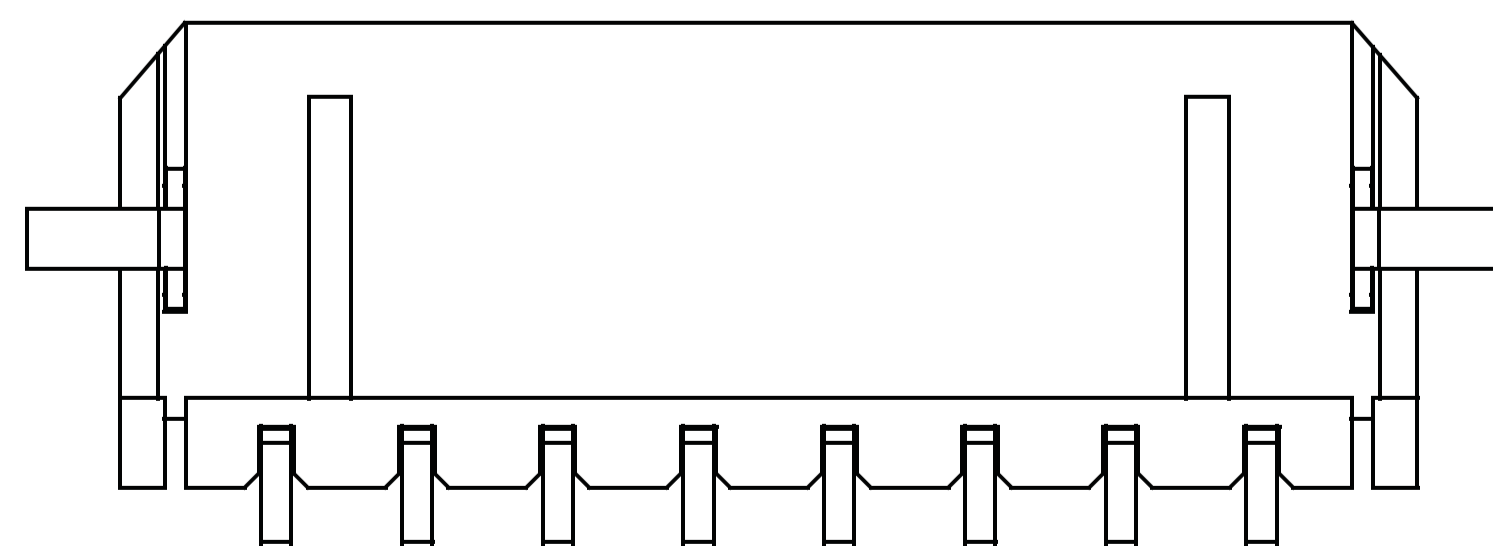
Current Rating: 5A AC,DC
 Voltage Rating: 250V AC,DC
 Temperature Range: -25°C ~ +105°C
 Contact Resistance: 10mΩ Max
 Insulation Resistance: 1000MΩ Min
 Withstanding Voltage: 1500V AC/minute
 Pin Material: Brass/Tin-plated
 Material: Nylon 46,UL94V-0
 Color: Black



PART NO.	Dimensions		
	A	B	C
3000MR-102TB2-U	9.65	3.00	14.20
3000MR-103TB2-U	12.65	6.00	17.20
3000MR-104TB2-U	15.65	9.00	20.20
3000MR-105TB2-U	18.65	12.00	23.20
3000MR-106TB2-U	21.65	15.00	26.20
3000MR-107TB2-U	24.65	18.00	29.20
3000MR-108TB2-U	27.65	21.00	32.20
3000MR-109TB2-U	30.65	24.00	35.20
3000MR-110TB2-U	33.65	27.00	38.20
3000MR-111TB2-U	36.65	30.00	41.20
3000MR-112TB2-U	39.65	33.00	44.20



Recommended PCB Layout
(PCB TOLERANCE ±0.05)



Part No.:3000MR-1XXTB2-U

Housing wafer Terminal



RoHS

AMTEK CONNECTORS MANUFACTURER