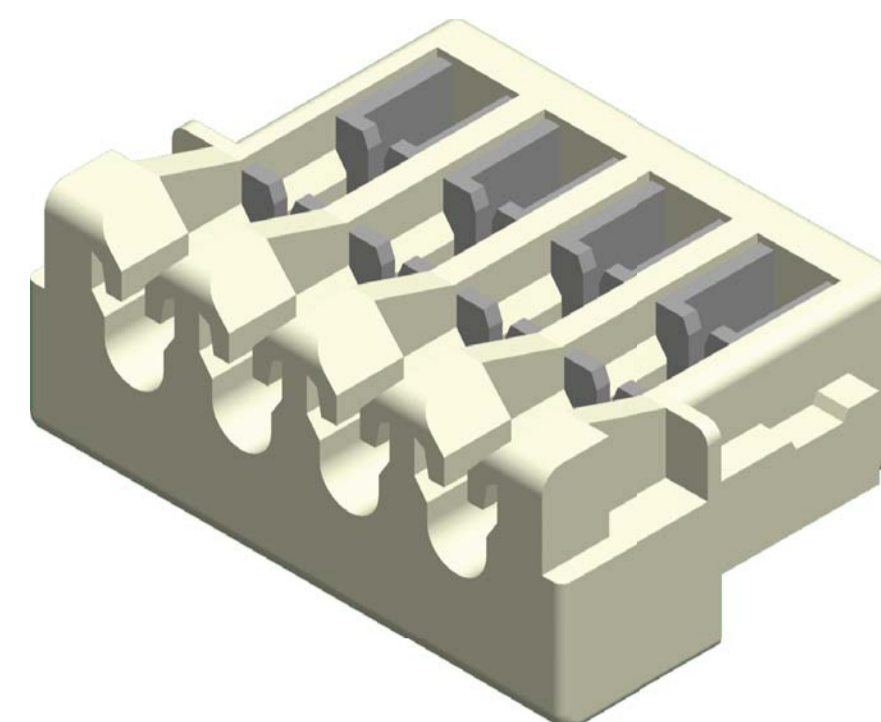
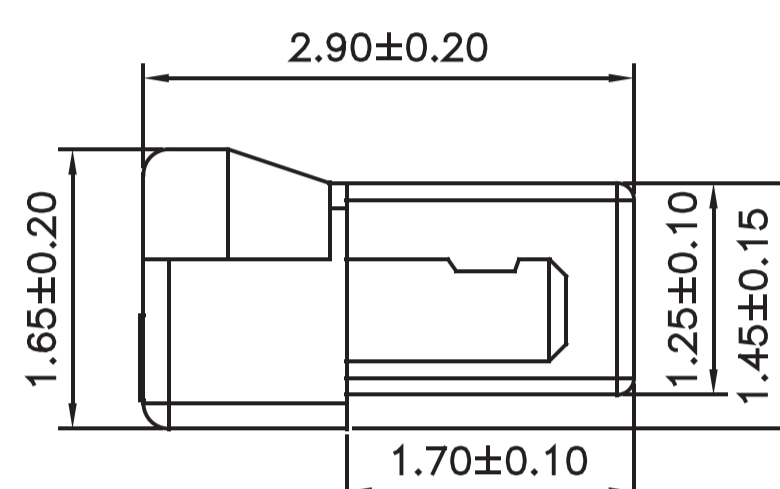
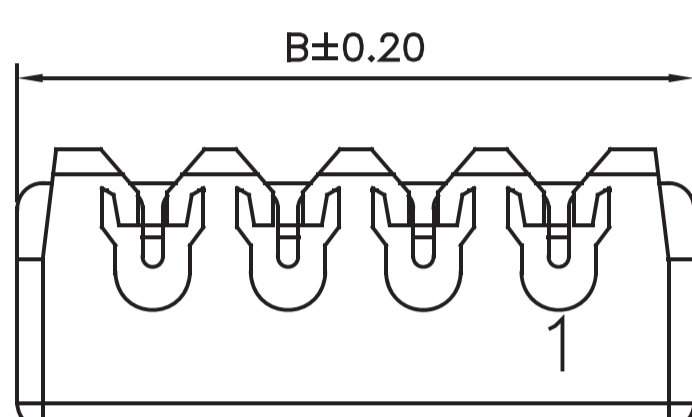
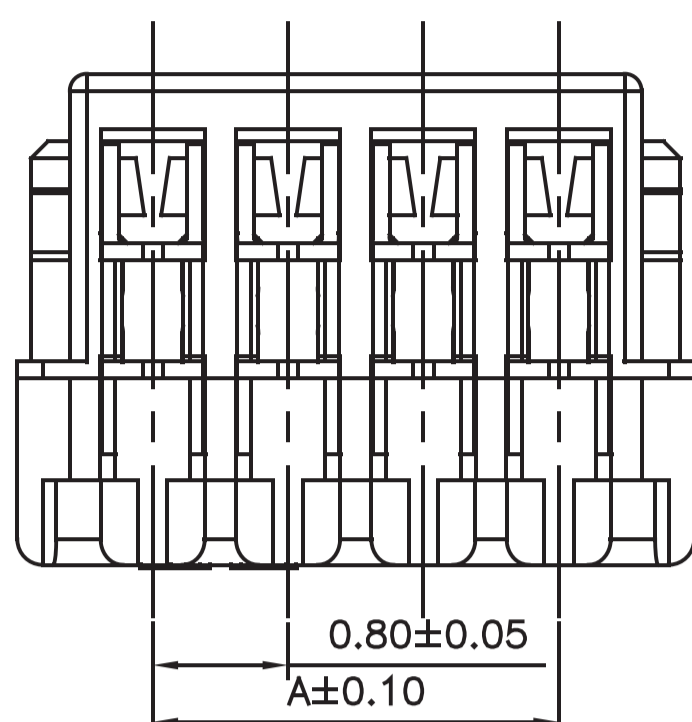


0.8mm Housing/Wafer

SPECIFICATIONS

Current Rating: 0.5A AC,DC
 Voltage Rating: 30V AC,DC
 Temperature Range: $-25^{\circ}\text{C} \sim +85^{\circ}\text{C}$
 Contact Resistance: 20m Ω Max.
 Insulation Resistance: 100M Ω Min.
 Withstanding Voltage: 200V AC/minute
 Contacts: Phosphor Bronze/Tin-plated
 Material: Nylon 46,UL94V-0
 Color: Natural(Beige)

PART NO.	Dimensions	
	A	B
0800IDC-02W-U	0.80	2.40
0800IDC-04W-U	2.40	4.00
0800IDC-08W-U	5.60	7.20
0800IDC-10W-U	7.20	8.80
0800IDC-12W-U	8.80	10.40
0800IDC-14W-U	10.40	12.00
0800IDC-15W-U	11.20	12.80
0800IDC-16W-U	12.00	13.60
0800IDC-17W-U	12.80	14.40
0800IDC-20W-U	15.20	16.80

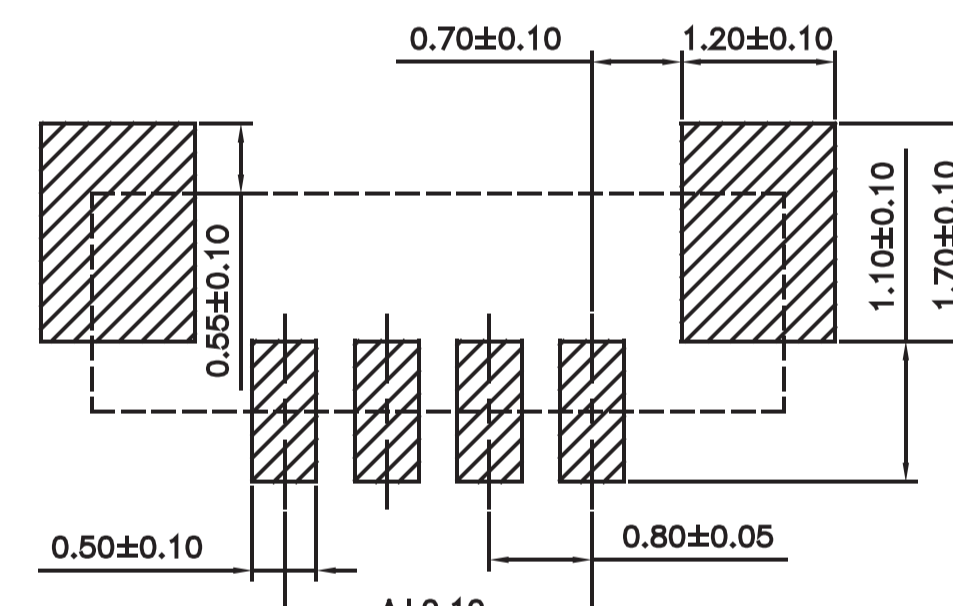
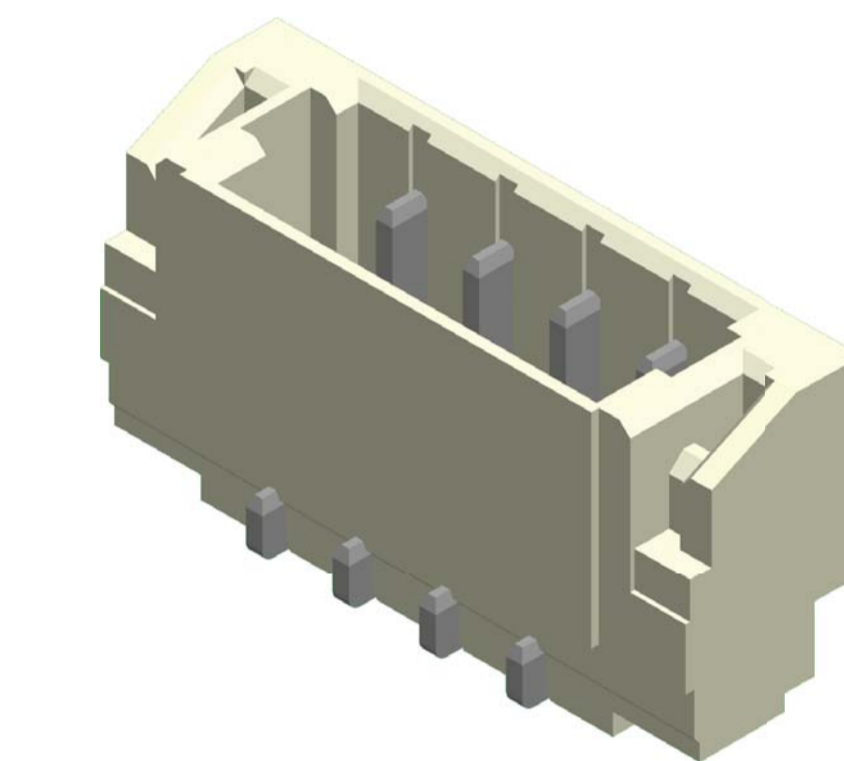
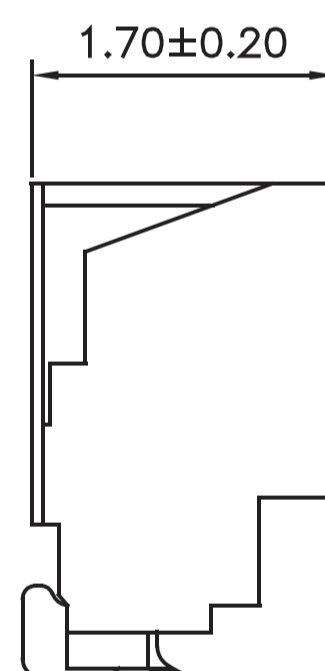
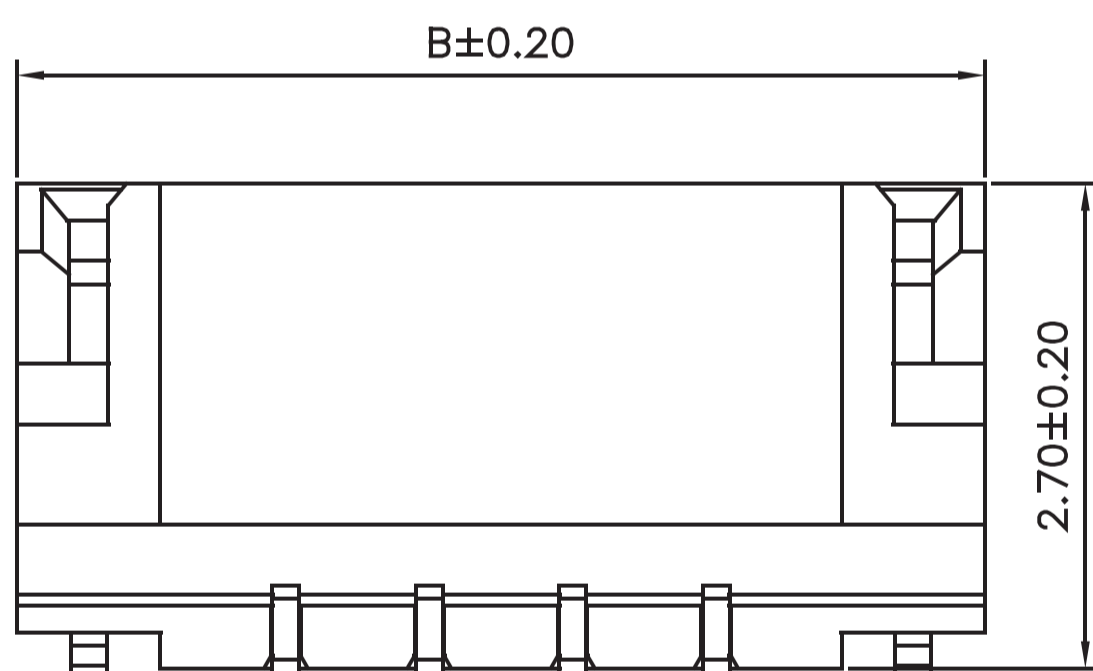
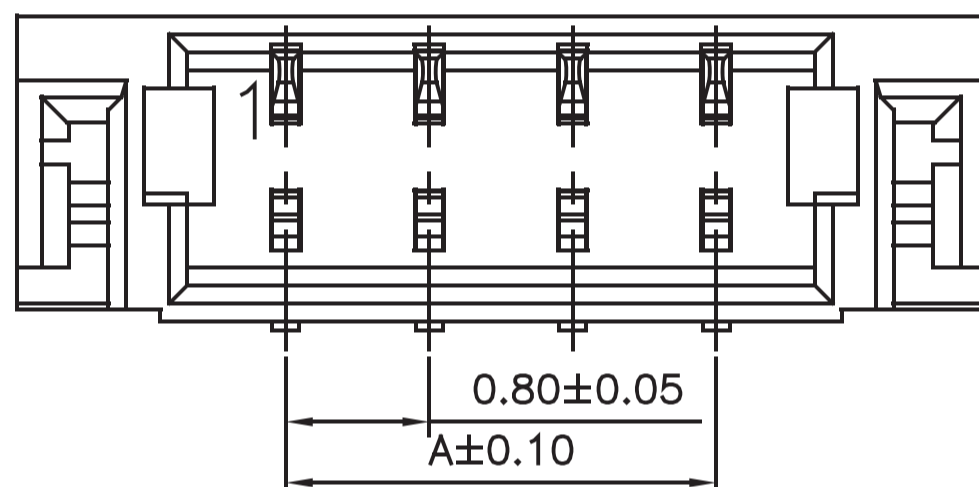


Part No.:0800IDC-XXW-U

SPECIFICATIONS

Current Rating: 0.5A AC,DC
 Voltage Rating: 30V AC,DC
 Temperature Range: $-25^{\circ}\text{C} \sim +85^{\circ}\text{C}$
 Contact Resistance: 20m Ω Max.
 Insulation Resistance: 100M Ω Min.
 Withstanding Voltage: 200V AC/minute
 Pin Material: Phosphor Bronze/Tin-plated
 Solder Tabs: Phosphor Bronze/Tin-plated
 Material: Nylon 6T,UL94V-0
 Cap: Nylon 6T,UL94V-0,Natural(Beige)
 Color: Natural(Beige)

PART NO.	Dimensions	
	A	B
0800MS-02TW-U	0.80	3.80
0800MS-04TW-U	2.40	5.40
0800MS-08TW-U	5.60	8.60
0800MS-10TW-U	7.20	10.20
0800MS-12TW-U	8.80	11.80
0800MS-14TW-U	10.40	13.40
0800MS-15TW-U	11.20	14.20
0800MS-16TW-U	12.00	15.00
0800MS-17TW-U	12.80	15.80
0800MS-20TW-U	15.20	18.20



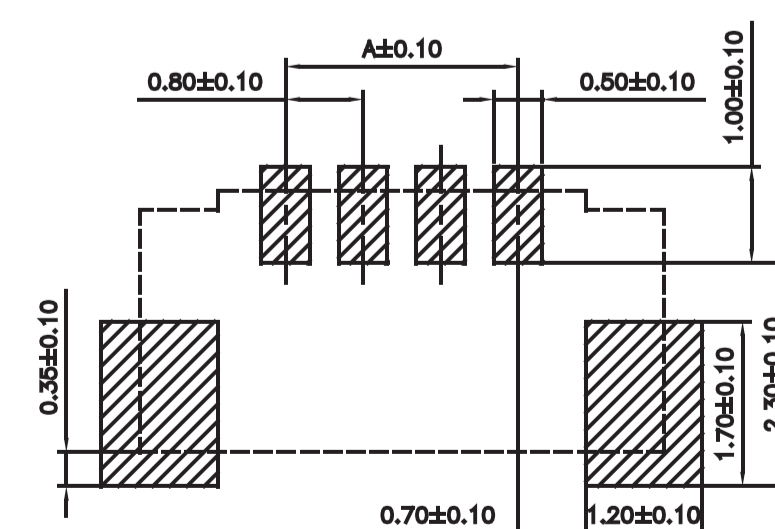
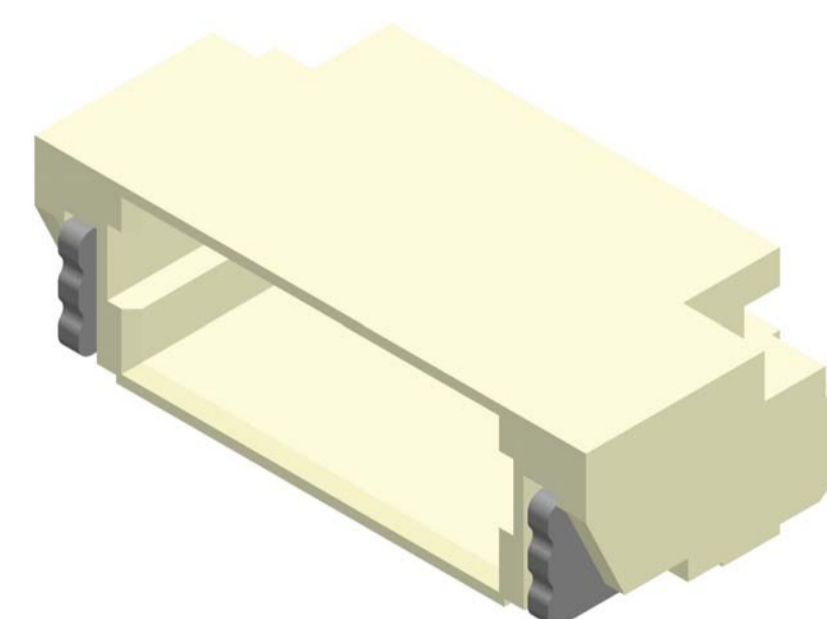
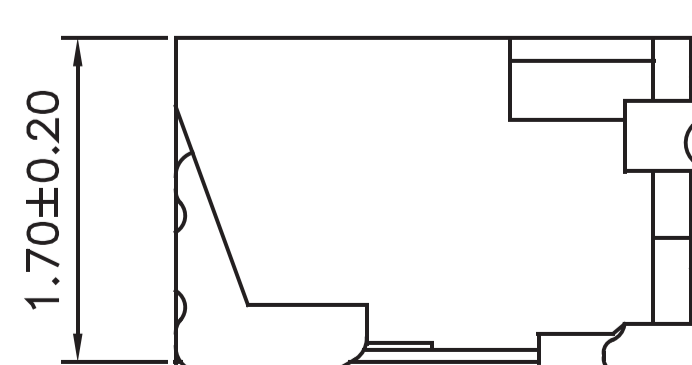
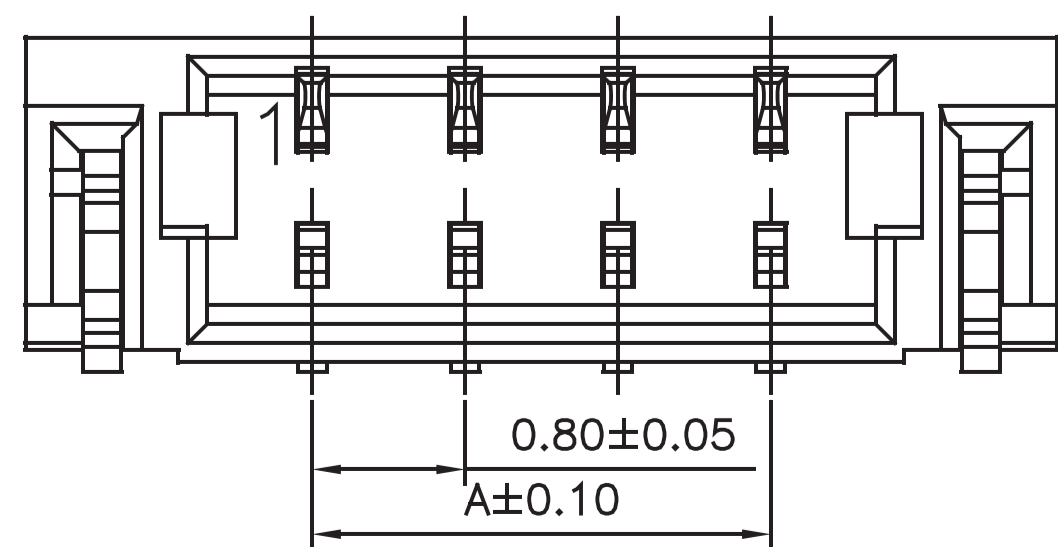
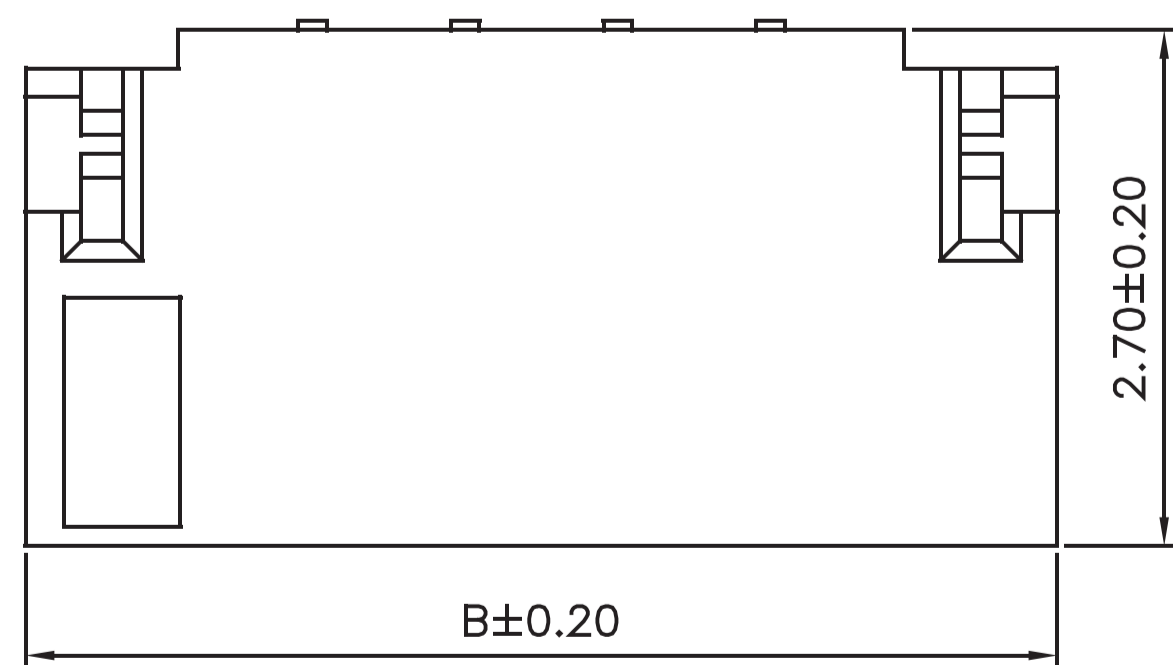
P.C.B. LAYOUT

Part No.:0800MS-XXTW-U

SPECIFICATIONS

Current Rating: 0.5A AC,DC
 Voltage Rating: 30V AC,DC
 Temperature Range: $-25^{\circ}\text{C} \sim +85^{\circ}\text{C}$
 Contact Resistance: 20m Ω Max.
 Insulation Resistance: 100M Ω Min.
 Withstanding Voltage: 200V AC/minute
 Pin Material: Phosphor Bronze/Tin-plated
 Solder Tabs: Phosphor Bronze/Tin-plated
 Material: Nylon 6T,UL94V-0
 Cap: Nylon 6T,UL94V-0,Natural(Beige)
 Color: Natural(Beige)

PART NO.	Dimensions	
	A	B
0800MR-02TW-U	0.80	3.80
0800MR-04TW-U	2.40	5.40
0800MR-08TW-U	5.60	8.60
0800MR-10TW-U	7.20	10.20
0800MR-12TW-U	8.80	11.80
0800MR-14TW-U	10.40	13.40
0800MR-15TW-U	11.20	14.20
0800MR-16TW-U	12.00	15.00
0800MR-17TW-U	12.80	15.80
0800MR-20TW-U	15.20	18.20



P.C.B. LAYOUT

Part No.:0800MR-XXTW-U