

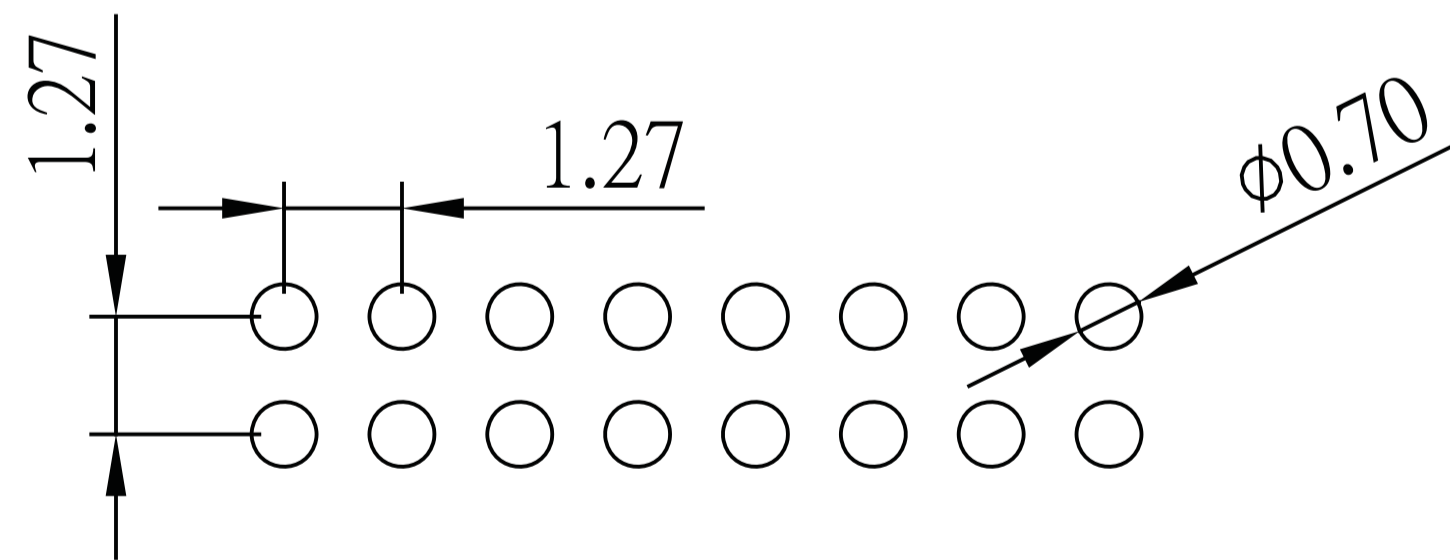
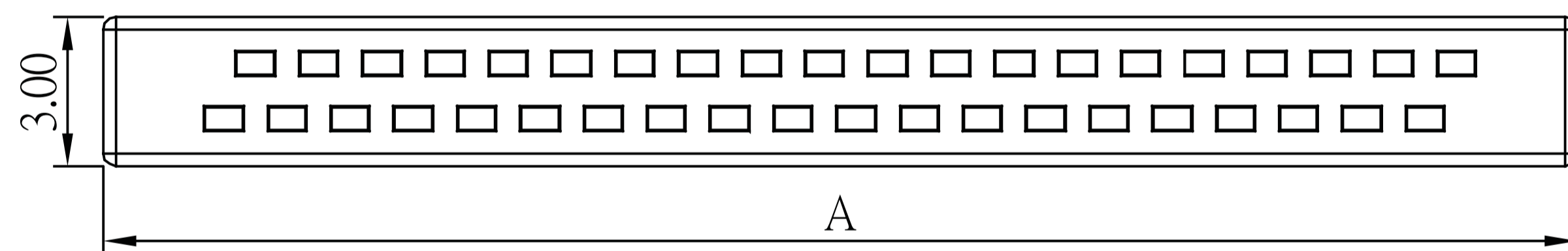
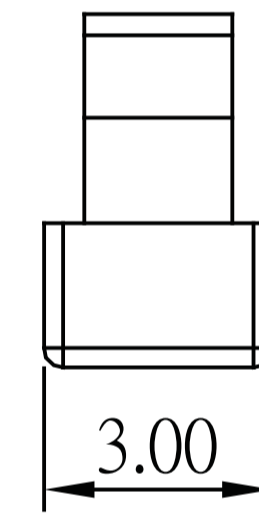
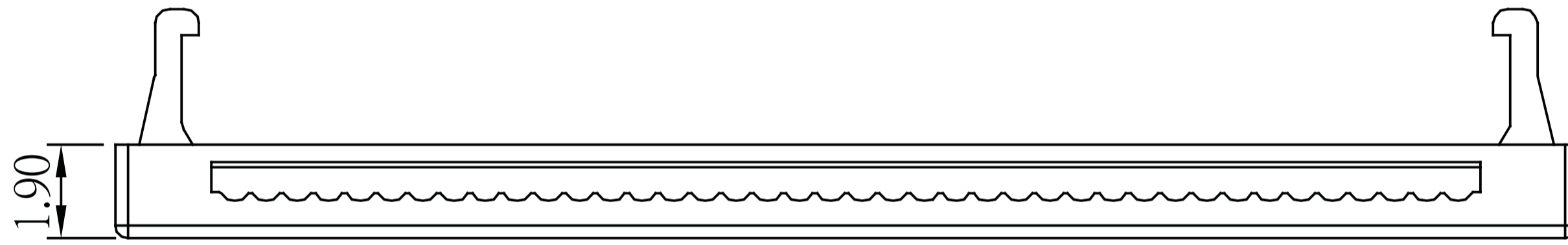
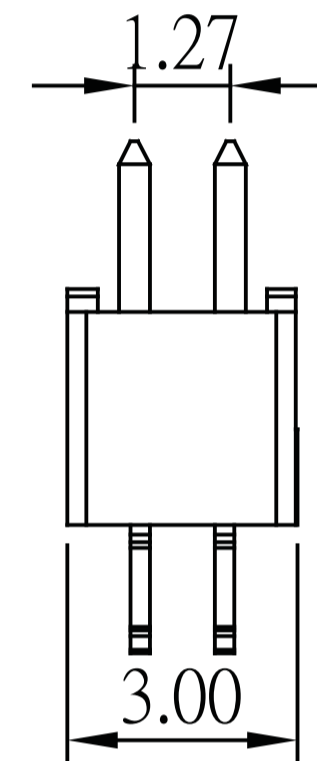
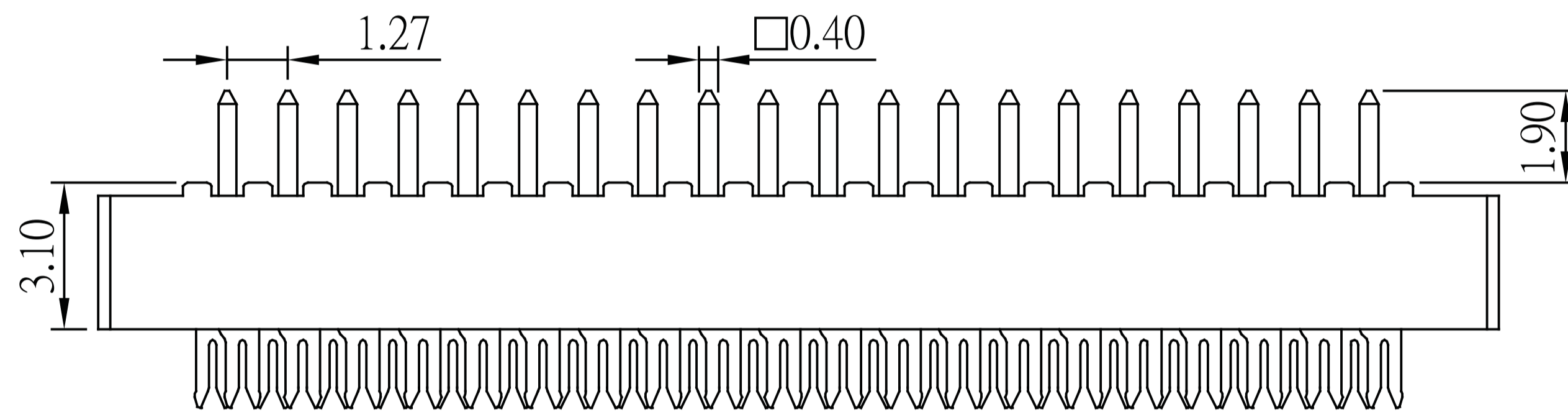
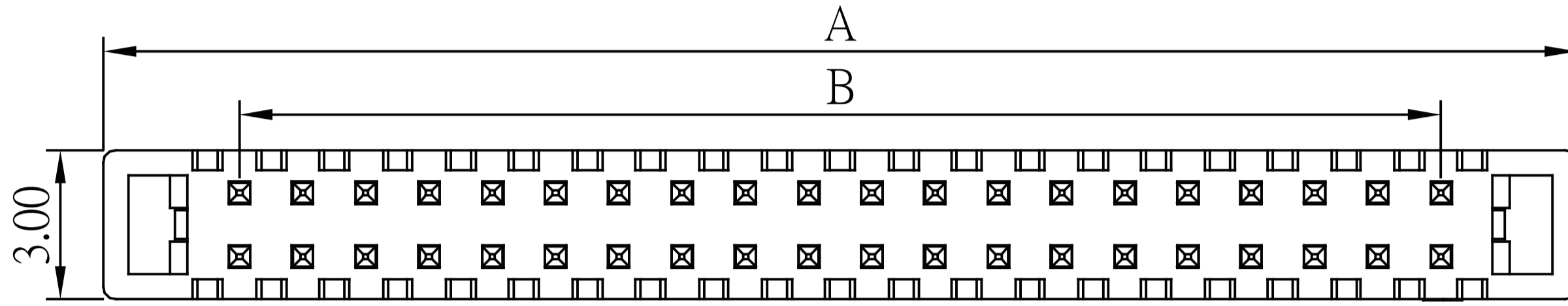
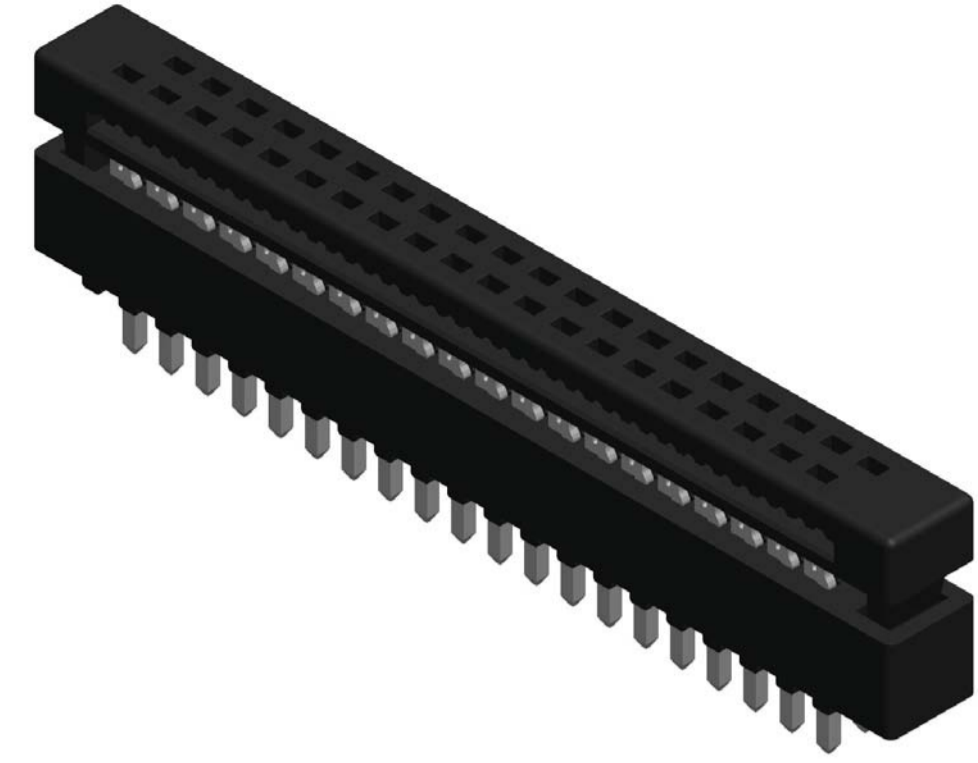
Dip Plug 1.27mm X 1.27mm

SPECIFICATION

Current Rate:0.5 AMP
 Insulation Resistance:1000MΩ Min
 Contact Resistance:30mΩ Max
 Dielectric Voltage:250V AC for one minute
 Operation Temperature:-40°C to +105°C

MATERIAL

Insulator:Polyester,UL 94V-0
 ◎Standard:PBT
 Contact Pin:Copper Alloy
 Contact Plating:Tin Plated



Recommended PCB Layout
 (PCB TOLERANCE ±0.05)

◎Mate with flat cable Pitch 0.635 mm

No. of Contacts	Dim. A	Dim. B
6	8.01	2.54
8	9.28	3.81
10	10.55	5.08
12	11.82	6.35
14	13.09	7.62
16	14.36	8.89
18	15.63	10.16
20	16.90	11.43
22	18.17	12.70
26	20.71	15.24
30	23.25	17.78
34	25.79	20.32
40	29.60	24.13
44	32.14	26.67
50	35.95	30.48
60	42.30	36.83
68	47.38	41.91
80	55.00	49.53

ORDER INFORMATION

