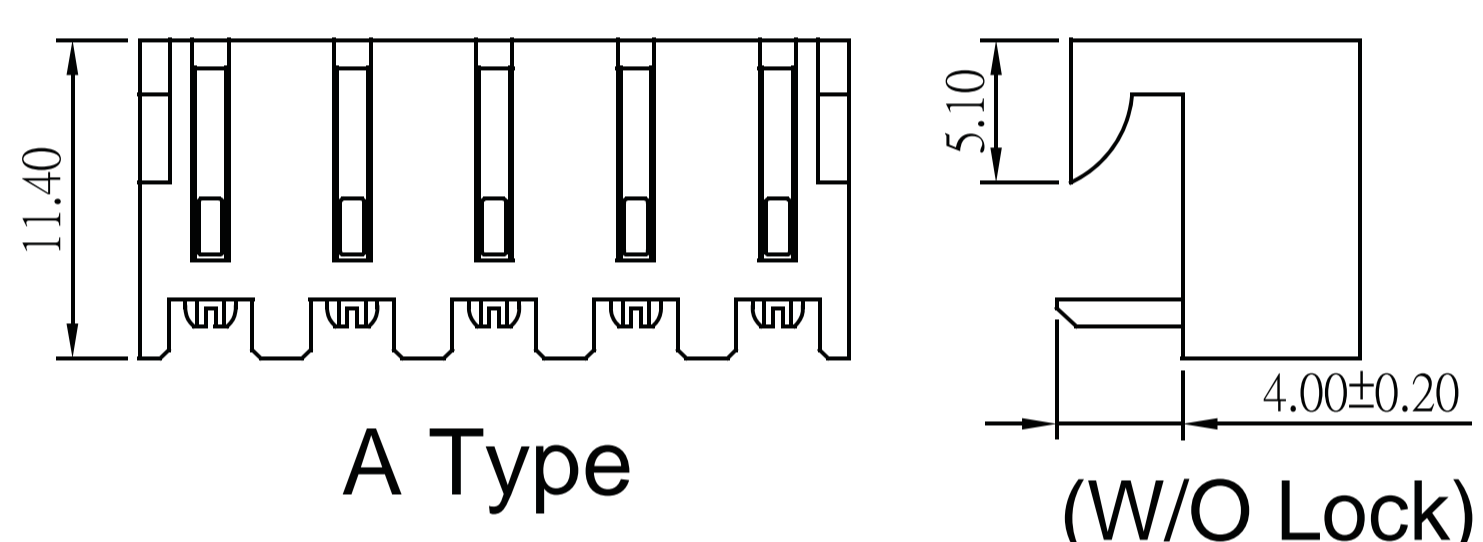
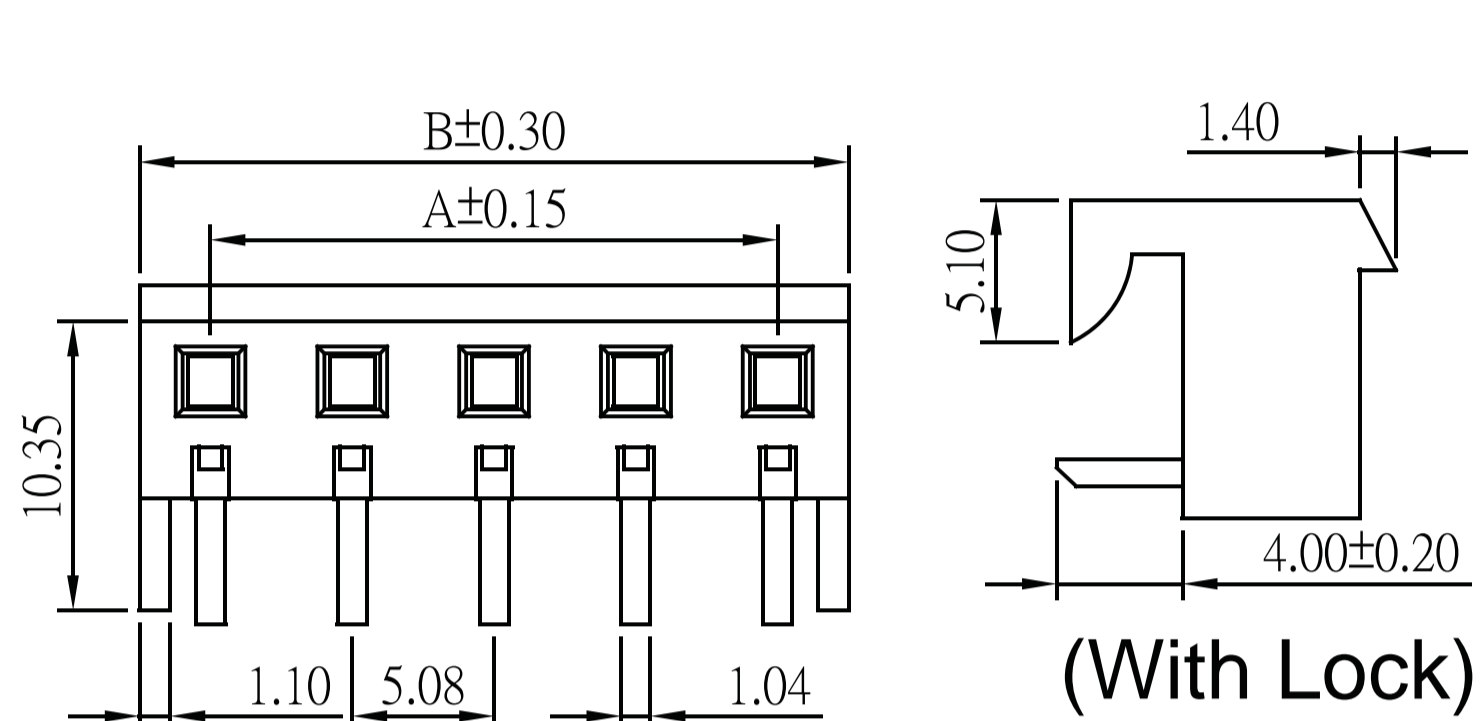
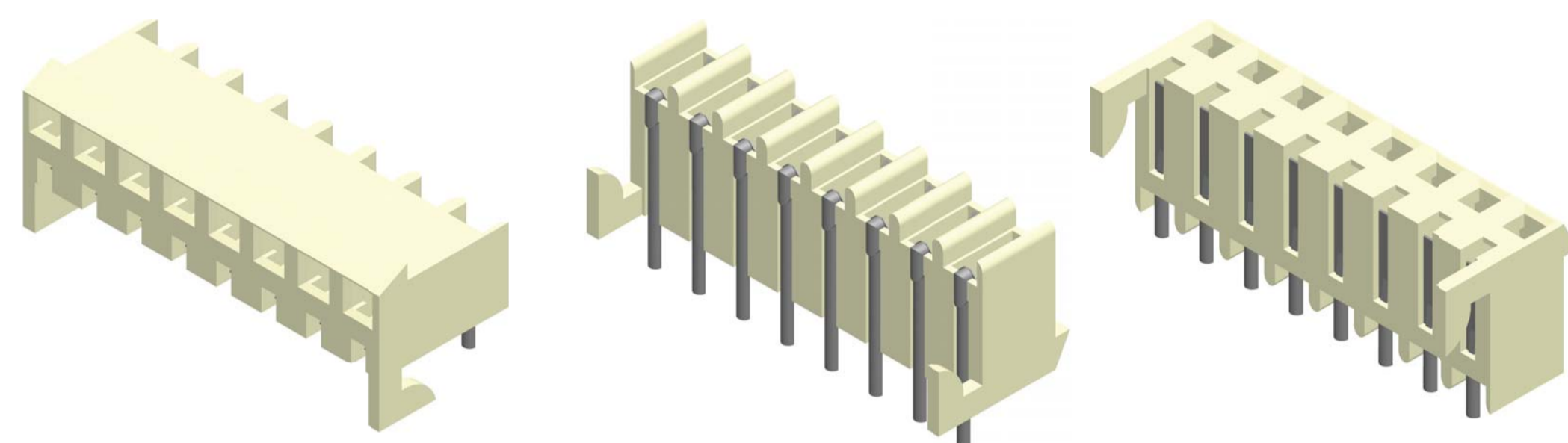


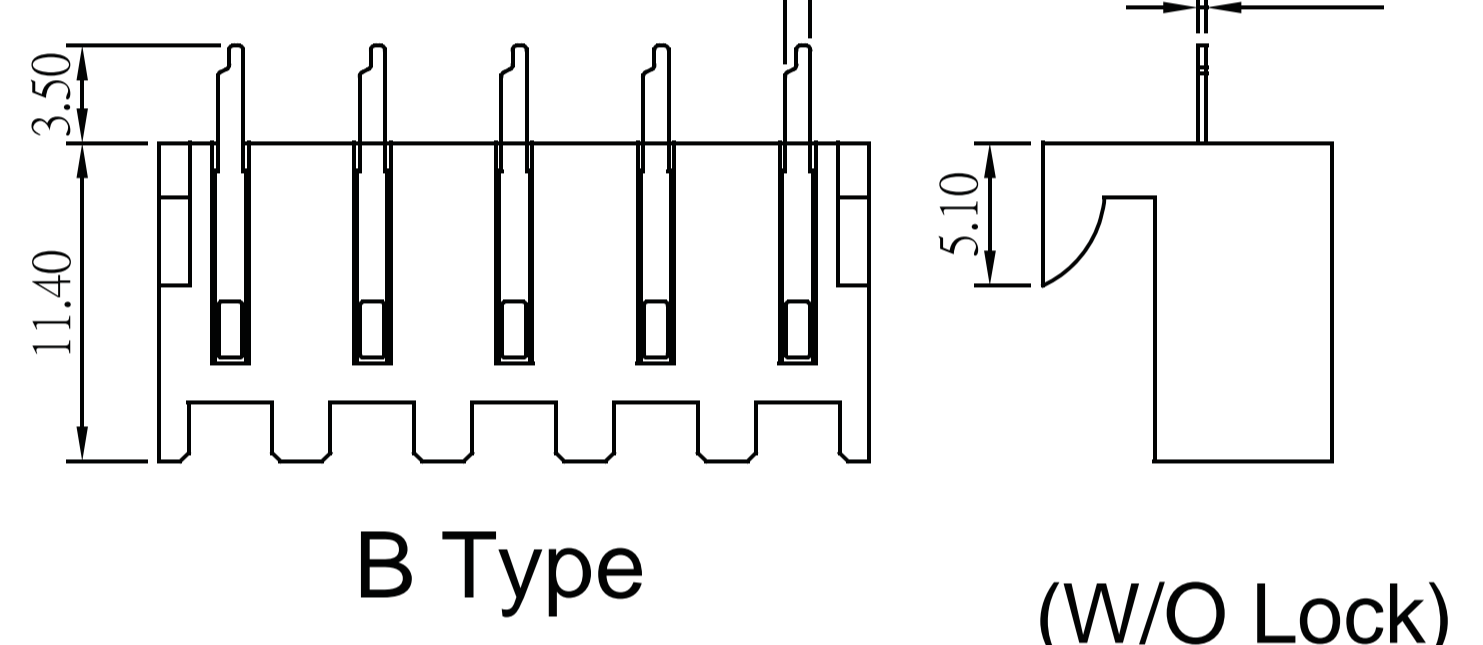
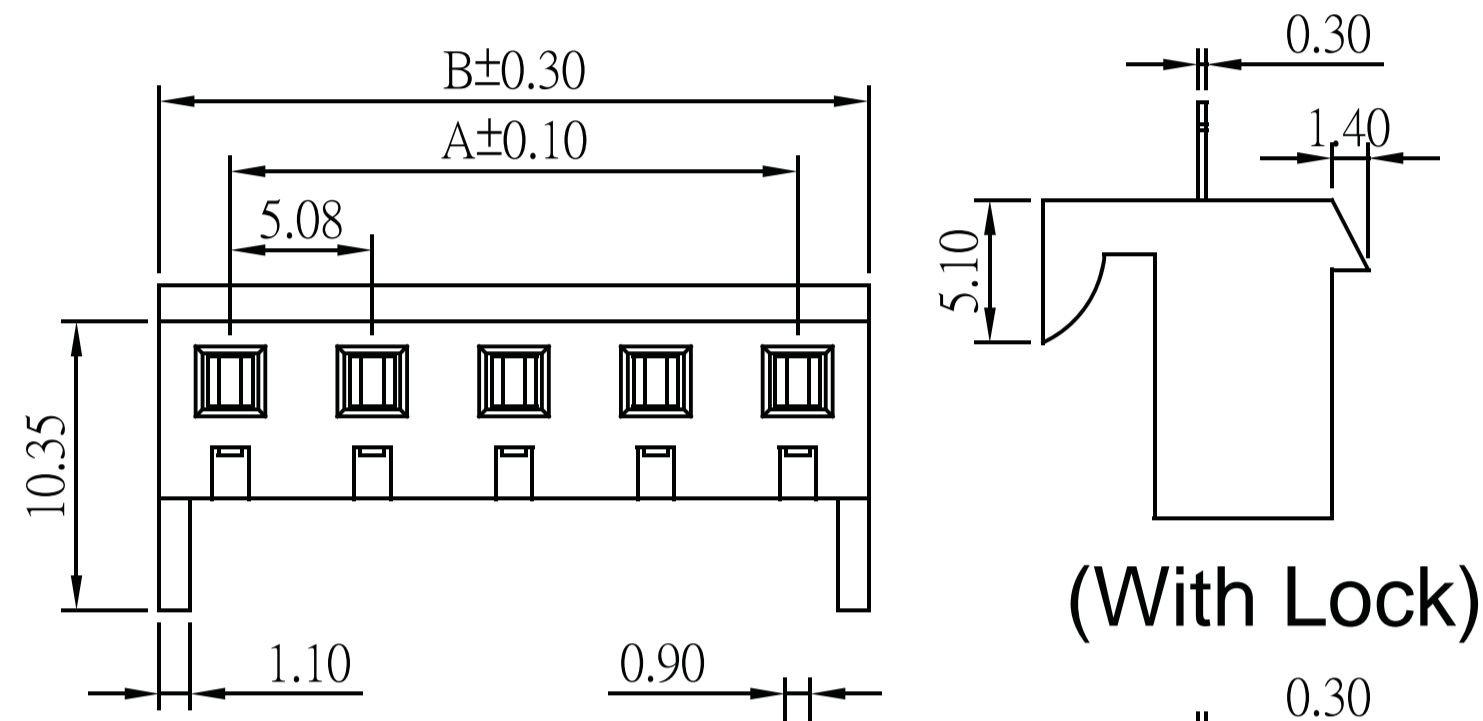
## 5.08mm Wafer DIP Type

### SPECIFICATIONS

Current Rating: 7 A AC,DC  
 Voltage Rating: 250V AC,DC  
 Temperature Range: -25°C ~ +85°C  
 Contact Resistance: 10mΩ Max  
 Insulation Resistance: 1000MΩ Min  
 Withstanding Voltage: 1500V AC/minute  
 Pin Material: Brass/Tin-plated  
 Material: Nylon 66,UL94V-0  
 Color: Natural(White)

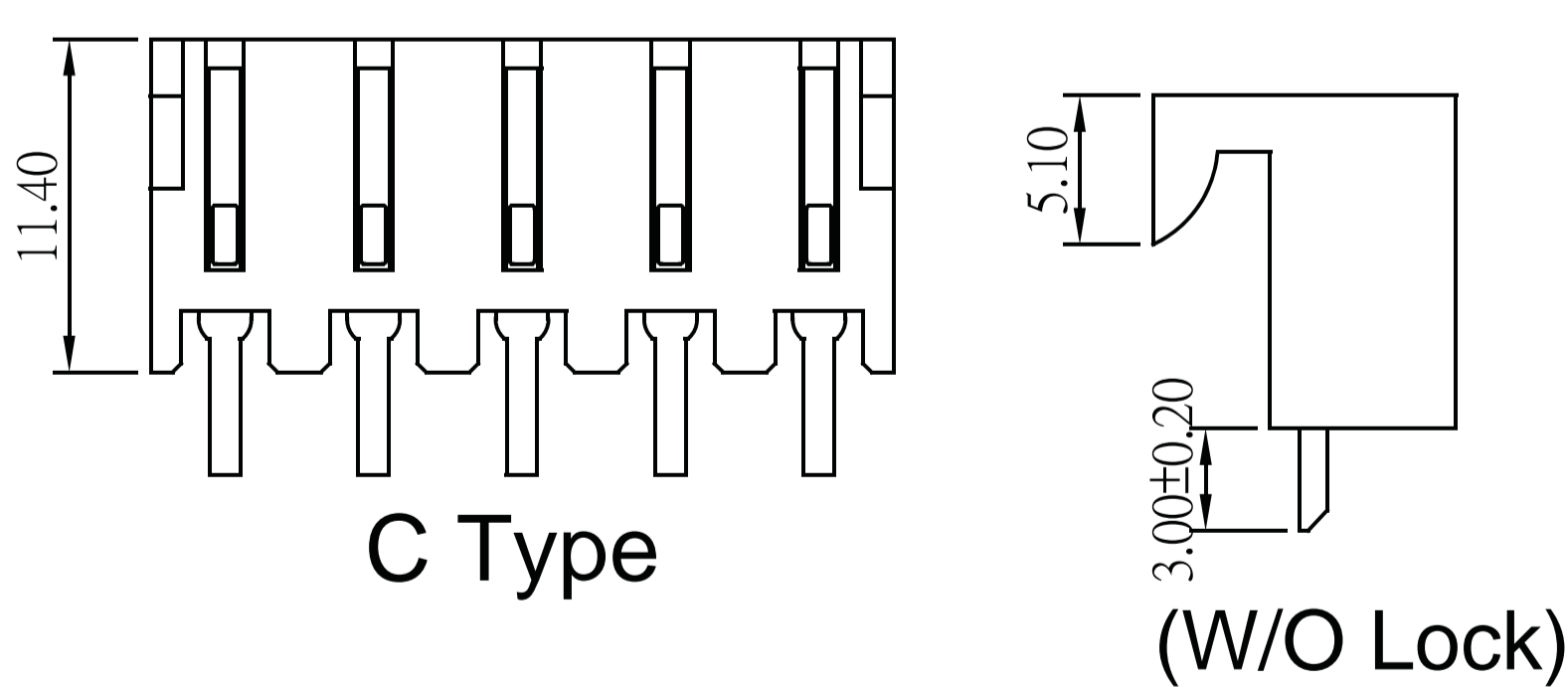
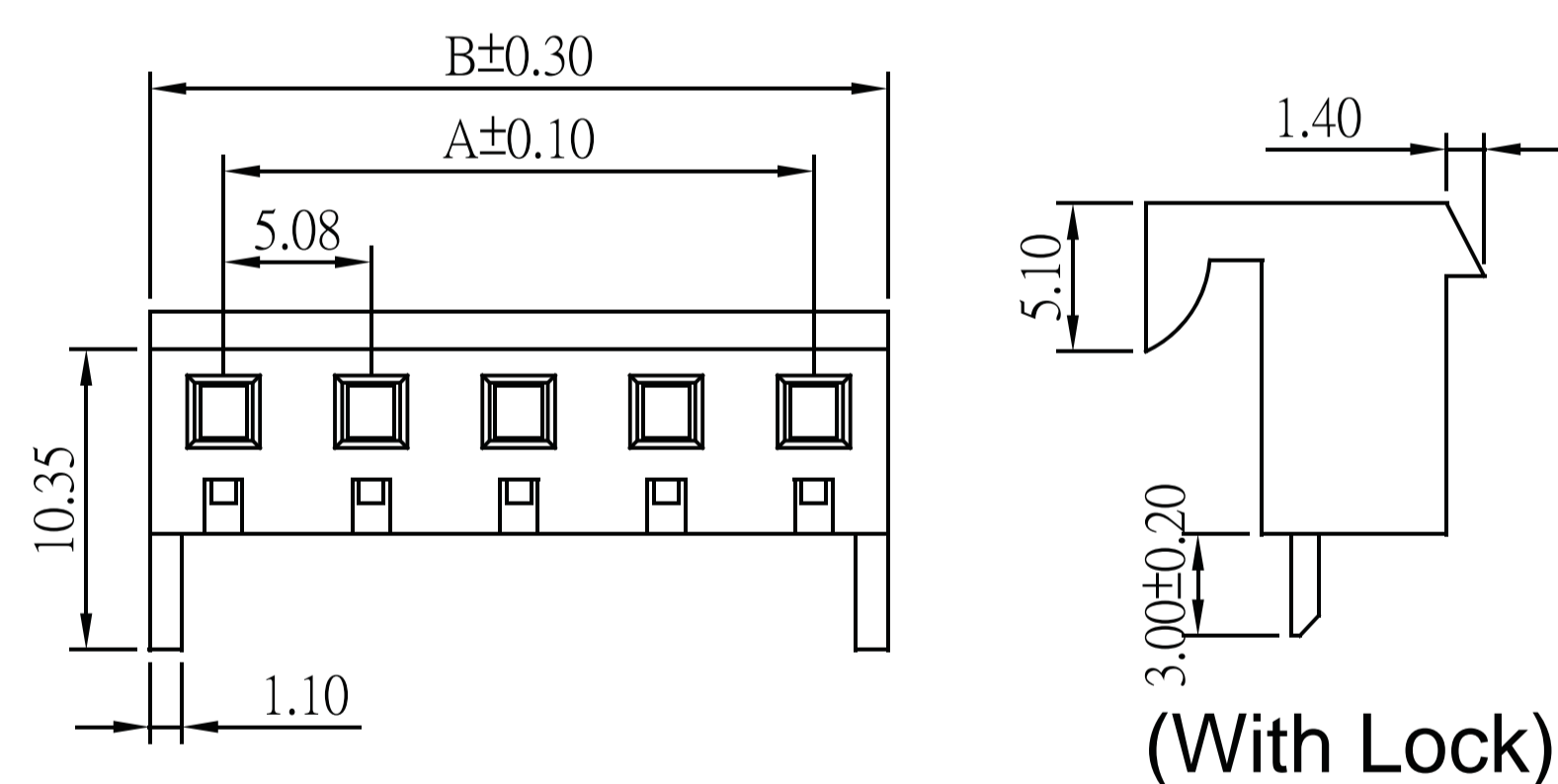


A Type

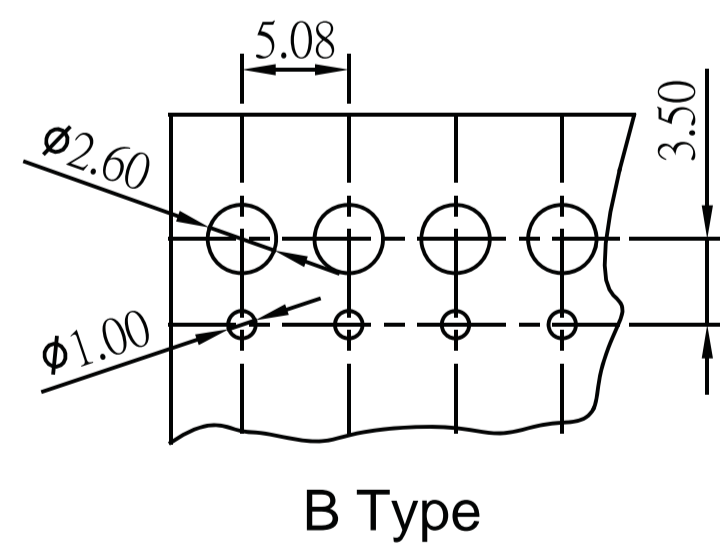
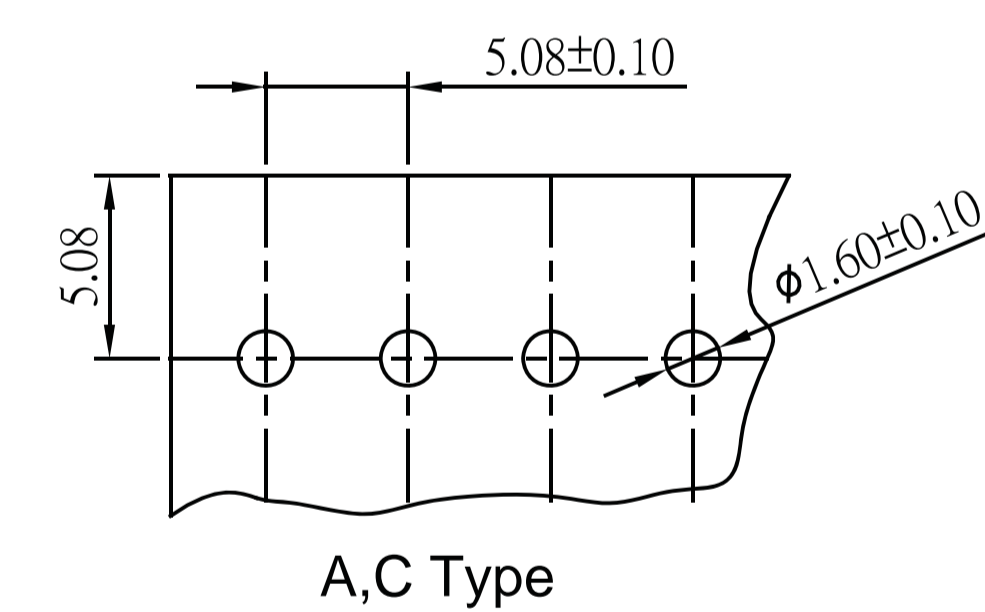


B Type

| No. of Contacts | DIMENSION |        |
|-----------------|-----------|--------|
|                 | A         | B      |
| 2               | 5.08      | 10.16  |
| 3               | 10.16     | 15.24  |
| 4               | 15.24     | 20.32  |
| 5               | 20.32     | 25.40  |
| 6               | 25.40     | 30.48  |
| 7               | 30.48     | 35.56  |
| 8               | 35.56     | 40.64  |
| 9               | 40.64     | 45.72  |
| 10              | 45.72     | 50.80  |
| 11              | 50.80     | 55.88  |
| 12              | 55.88     | 60.96  |
| 13              | 60.96     | 66.04  |
| 14              | 66.04     | 71.12  |
| 15              | 71.12     | 76.20  |
| 16              | 76.20     | 81.28  |
| 17              | 81.28     | 86.36  |
| 18              | 86.36     | 91.44  |
| 19              | 91.44     | 96.52  |
| 20              | 96.52     | 101.60 |



C Type



Recommended PCB Layout  
 (PCB TOLERANCE ±0.05)

### ORDER INFORMATION

