

CONNECTORS MANUFACTURER



Board To Board 0.8mm

Pb ROHS

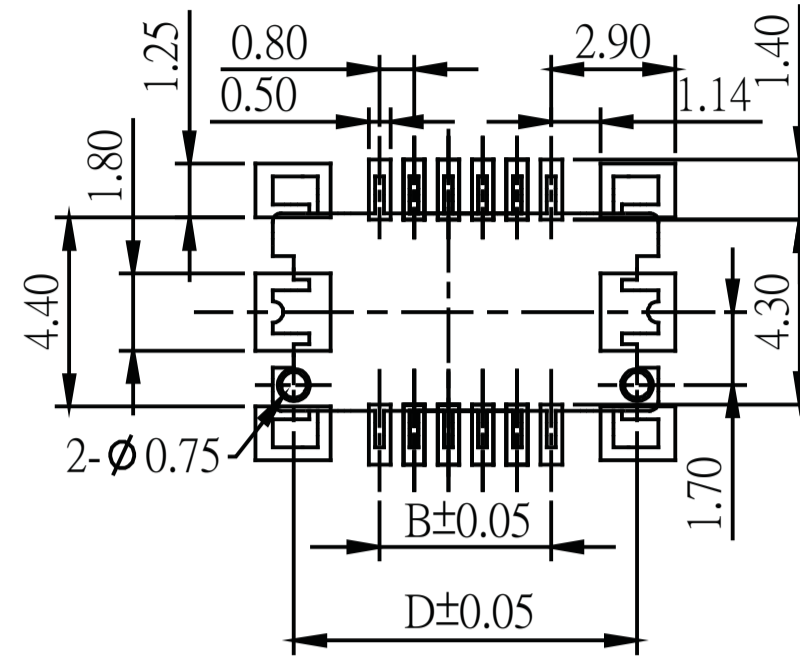
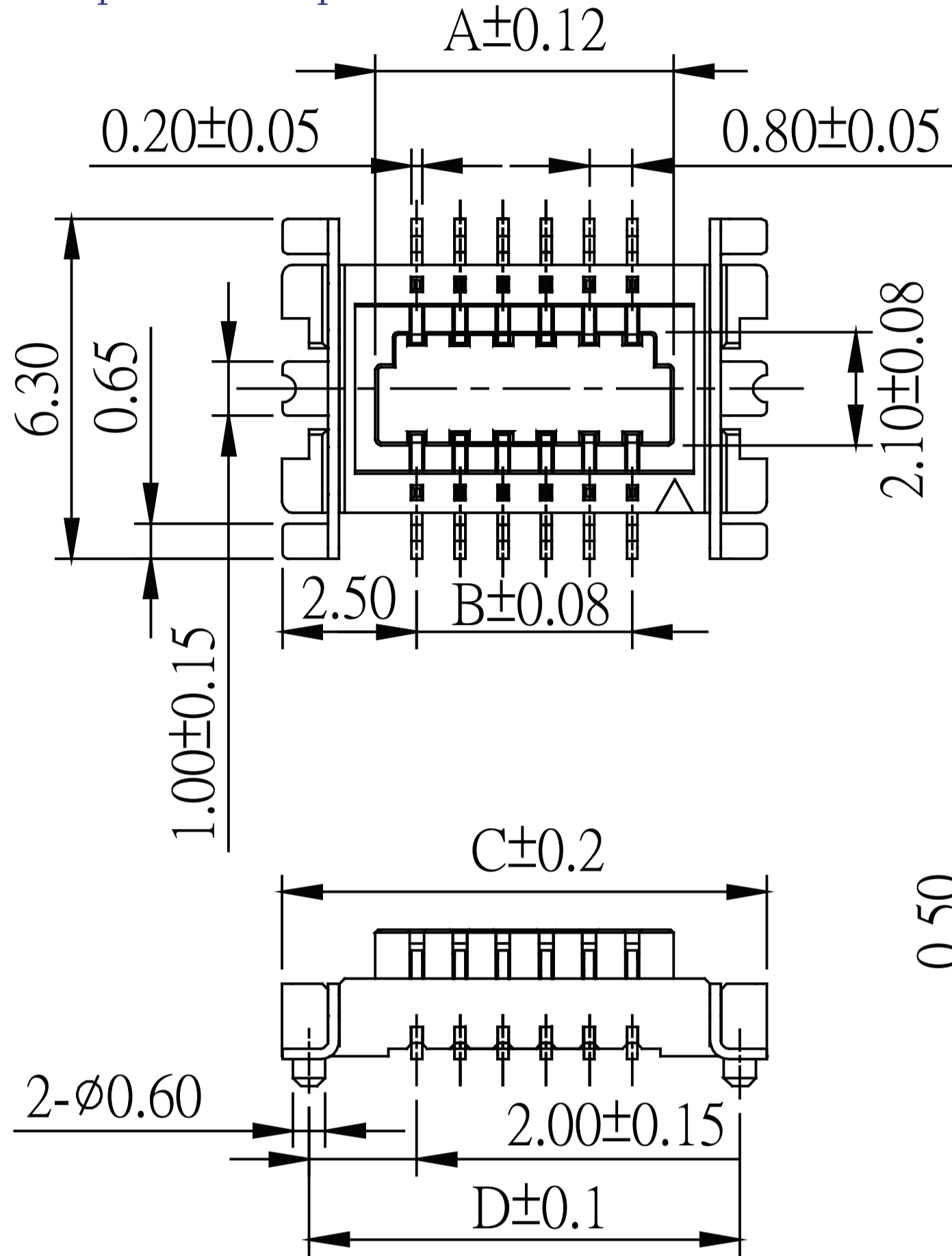
Board To Board Male 0.8mm H=2.4mm

SPECIFICATION

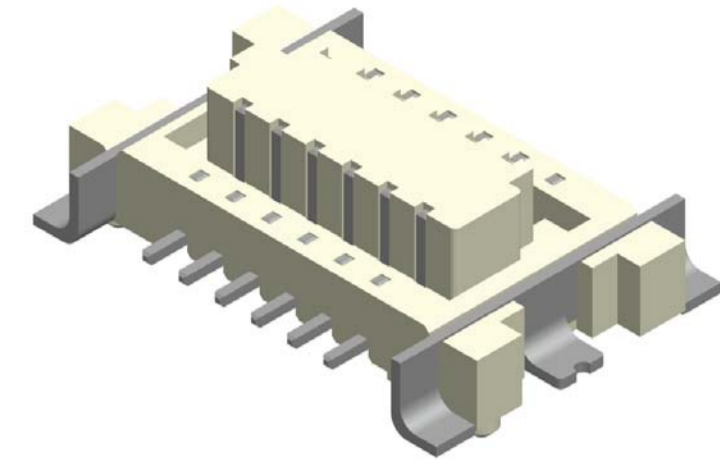
Current Rate:0.5 AMP
 Insulation Resistance:500MΩ Min.
 Contact Resistance:30mΩ Max.
 Dielectric Voltage:50V AC for one minute
 Operation Temperature:-20°C to +105°C

MATERIAL

Insulator:Polyester,UL 94V-0
 ©Standard:LCP
 Contact Pin:Copper Alloy
 Contact Plating:Nickel In All Area , Au/Tin Over Nickel



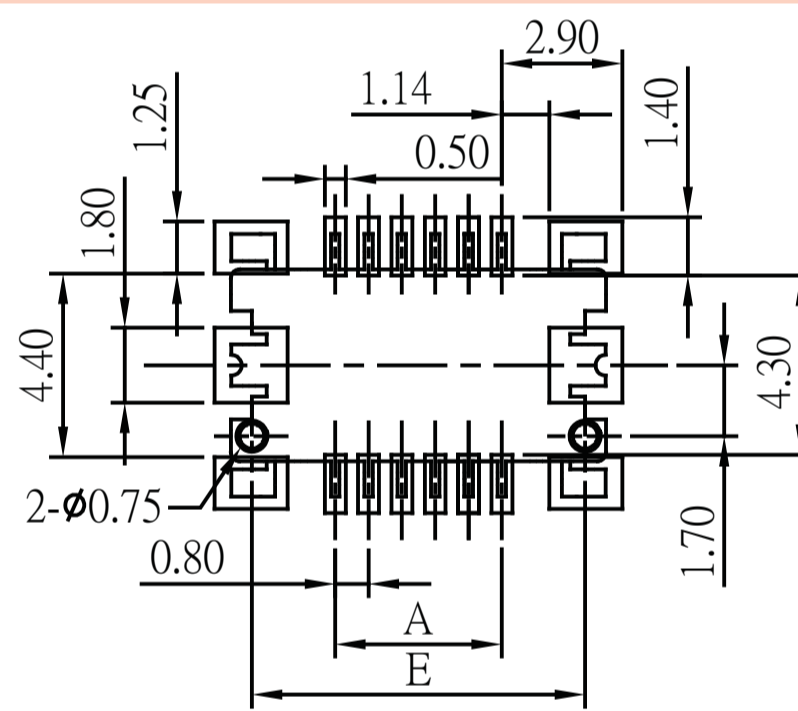
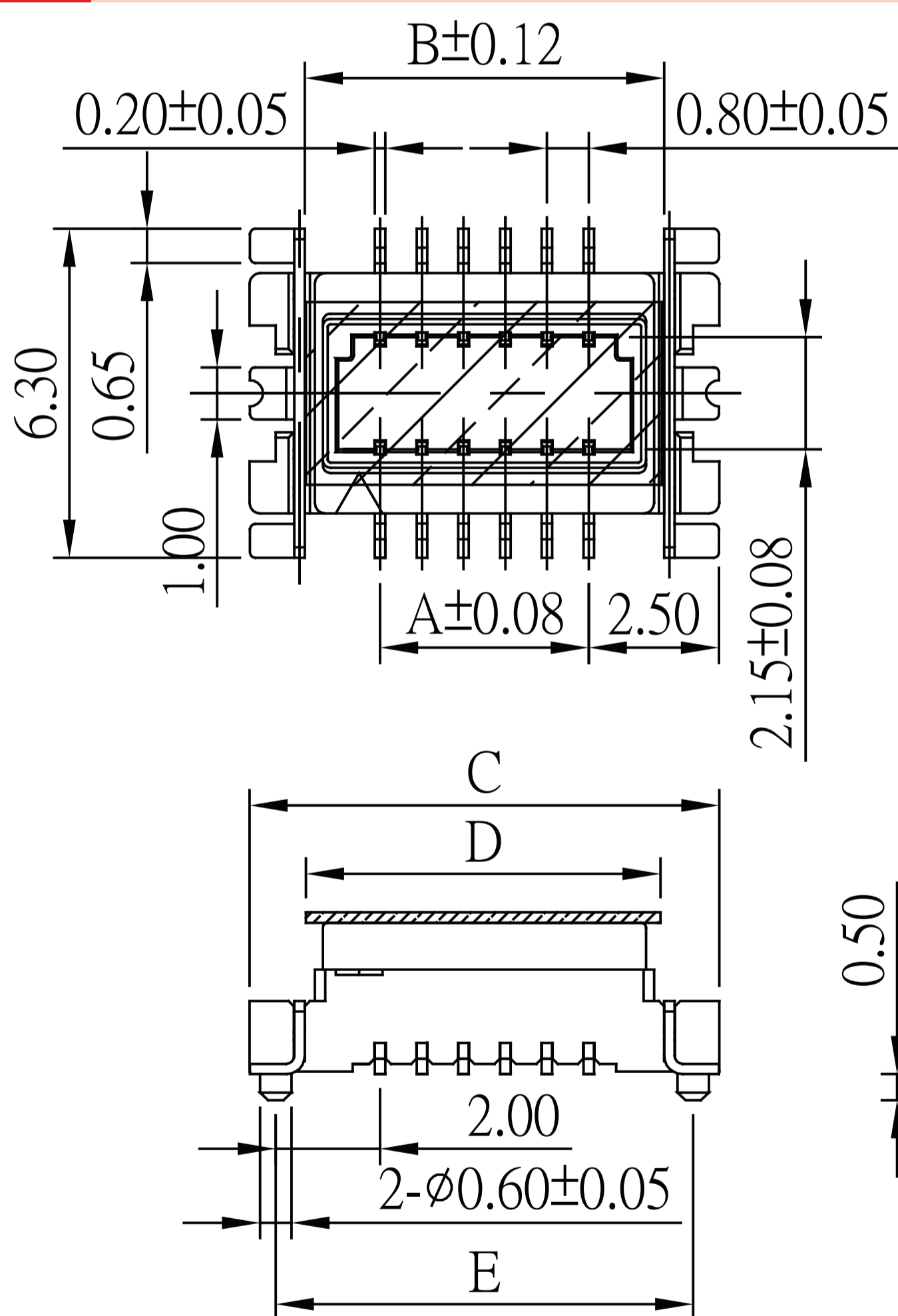
Recommended PCB Layout
(PCB TOLERANCE ±0.05)



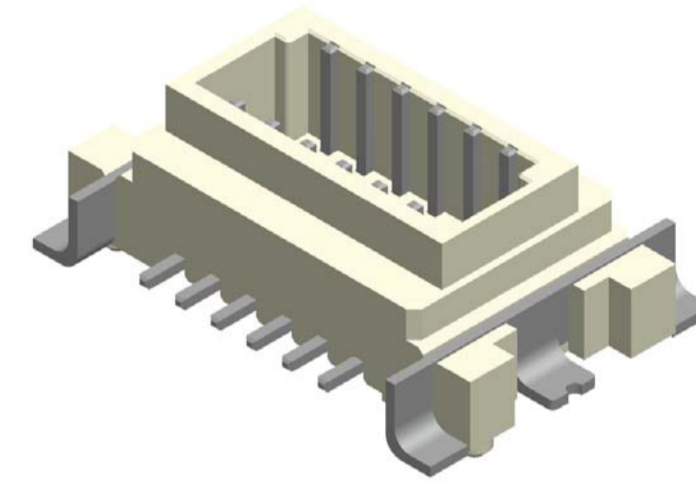
No. of Contacts	Dim. A	Dim. B	Dim. C	Dim. D
10	4.74	3.20	8.20	7.20
12	5.54	4.00	9.00	8.00
14	6.34	4.80	9.80	8.80
16	7.14	5.60	10.60	9.60
20	8.74	7.20	12.20	11.20
30	12.74	11.20	16.20	15.20

Part No.:BTB08MI24-XX-U

Board To Board Female 0.8mm H=2.9/3.6mm



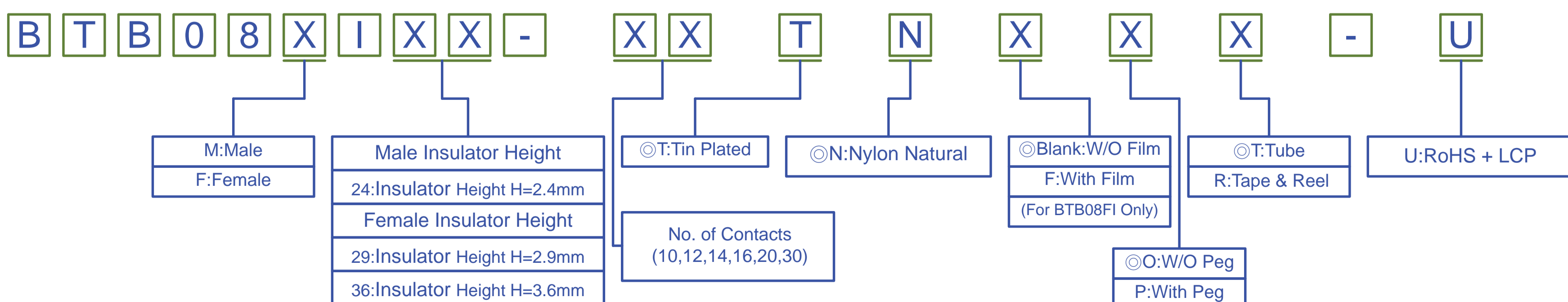
Recommended PCB Layout
(PCB TOLERANCE ±0.05)



No. of Contacts	Dim. A	Dim. B	Dim. C	Dim. D	Dim. E
10	3.20	4.80	8.20	6.00	7.20
12	4.00	5.60	9.00	6.80	8.00
14	4.80	6.40	9.80	7.60	8.80
16	5.60	7.20	10.60	8.40	9.60
20	7.20	8.80	12.20	10.00	11.20
30	11.20	12.80	16.20	14.00	15.20

Part No.:BTB08FI 29/36-XX-U

ORDER INFORMATION



AMTEK COMMUNICATIONS MANUFACTURING